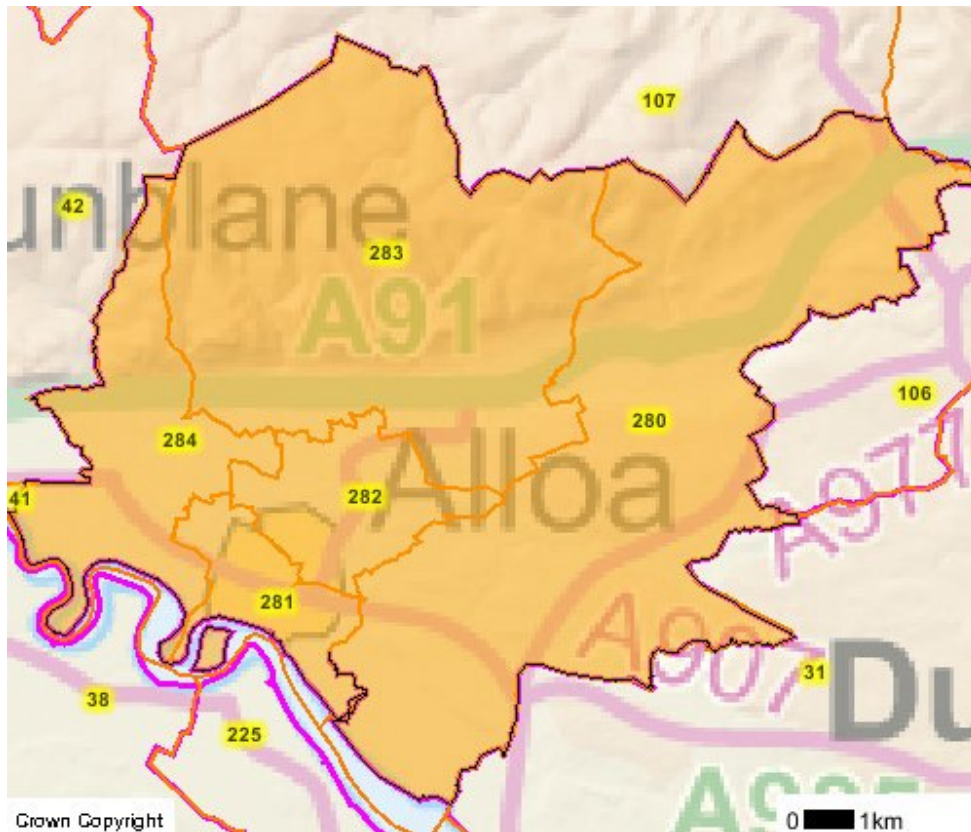


### Clackmannanshire West

The following information has been compiled for the Wards of Clackmannanshire Council

#### CLACKMANNANSHIRE COUNCIL WARD BOUNDARIES

### Map



Multi-member Ward	Multi-member Ward Code
Clackmannanshire Central	282
Clackmannanshire North	283
Clackmannanshire South	281
Clackmannanshire East	280
Clackmannanshire West	284

## Clackmannanshire East

### WARD ELECTORATE – 2007

Total: 7943

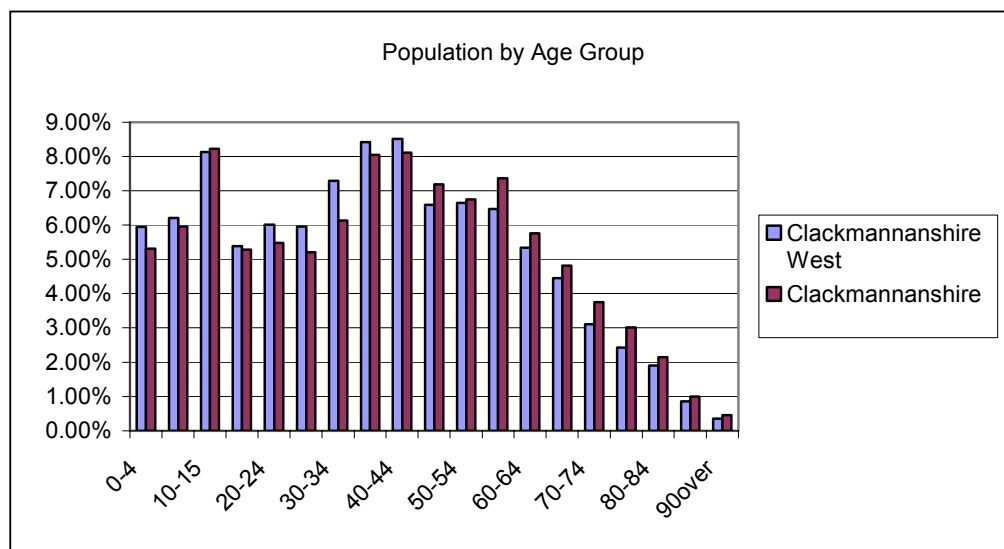
SOURCE: Electoral Registration Officer (ERO) Stirling

### RESIDENT POPULATION – 2005 (GROS Mid year estimates 2005)

Males	5273	The 2001 census reported that 99.16% of Clackmannanshire's population was white. This compares to 97.99% for Scotland.
Females	5295	
<b>Total</b>	<b>10568</b>	

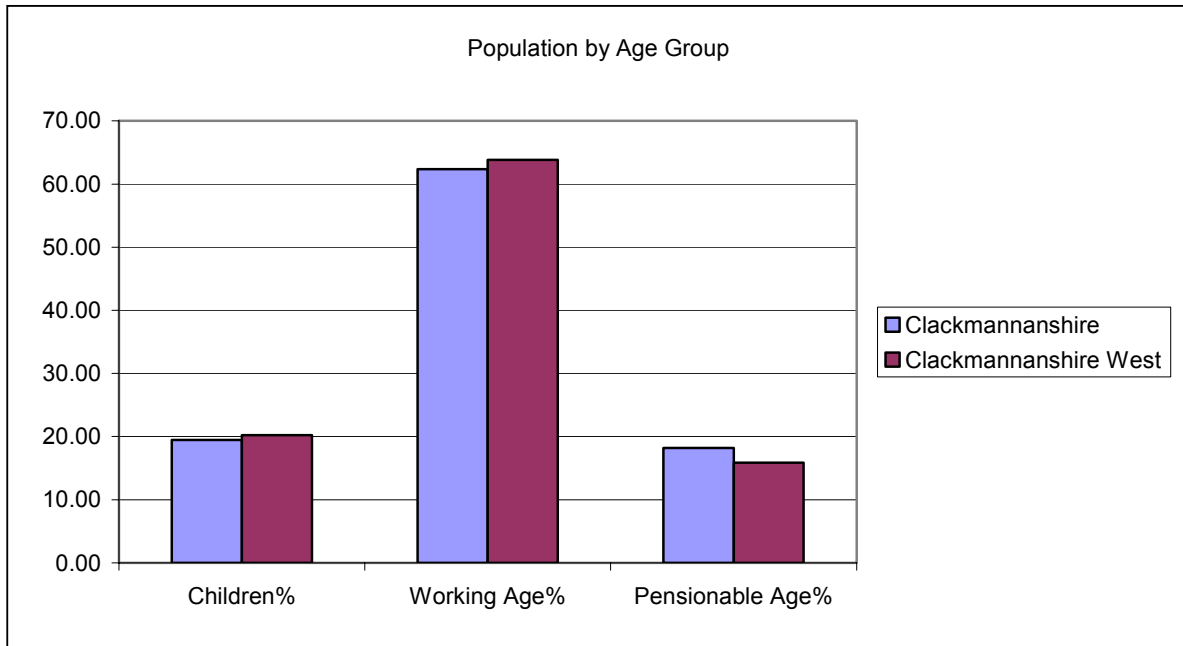
### POPULATION PROFILE – 2005

Age Group	Clackmannanshire West		Clackmannanshire
	Number	%	%
0-4	628	5.94%	5.31%
5-9	656	6.21%	5.95%
10-15	859	8.13%	8.22%
16-19	570	5.39%	5.28%
20-24	636	6.02%	5.48%
25-29	629	5.95%	5.21%
30-34	771	7.30%	6.13%
35-39	890	8.42%	8.05%
40-44	899	8.51%	8.11%
45-49	696	6.59%	7.19%
50-54	703	6.65%	6.75%
55-59	684	6.47%	7.37%
60-64	564	5.34%	5.76%
65-69	471	4.46%	4.82%
70-74	328	3.10%	3.75%
75-79	256	2.42%	3.01%
80-84	201	1.90%	2.14%
85-89	90	0.85%	1.00%
90 over	37	0.35%	0.45%
<b>Total</b>	<b>10568</b>	<b>100.00%</b>	<b>100.00%</b>

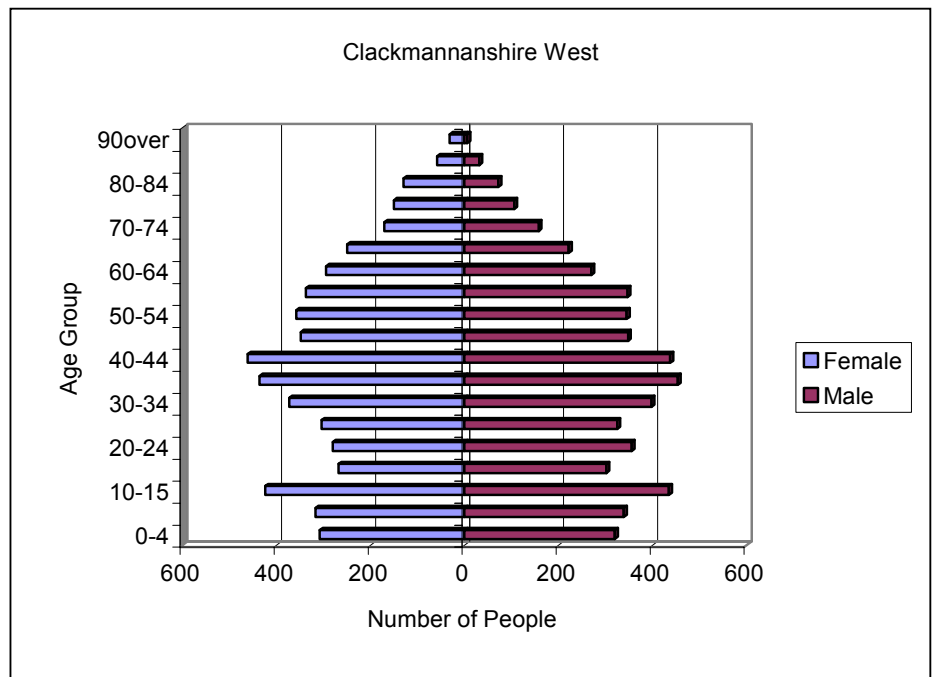


SOURCE: GROS Mid Year Population Estimate 2005 © Crown Copyright

Age Group	Clackmannanshire West		Clackmannanshire
	Number	%	%
Children	2143	20.28%	19.48%
Working Age	6748	63.85%	62.35%
Pensionable Age	1677	15.87%	18.17%
<b>Total</b>	<b>10568</b>	<b>100%</b>	<b>100%</b>



Age Group	Males	Females
0-4	320	308
5-9	339	317
10-15	435	424
16-19	302	268
20-24	356	280
25-29	325	304
30-34	398	373
35-39	454	436
40-44	438	461
45-49	348	348
50-54	345	358
55-59	347	337
60-64	270	294
65-69	222	249
70-74	158	170
75-79	106	150
80-84	72	129
85-89	32	58
90 over	6	31
<b>Total</b>	<b>5273</b>	<b>5295</b>



SOURCE: GROS Mid Year Population Estimate 2005 © Crown Copyright

## Deprivation

Local Authority	No of data zones in LA	5% Most deprived data zones				10% Most deprived data zones				15% Most deprived data zones			
		SIMD 2004		SIMD 2006		SIMD 2004		SIMD 2006		SIMD 2004		SIMD 2006	
		No. of data zones	Local share (%)	No. of data zones	Local share (%)	No. of data zones	Local share (%)	No. of data zones	Local share (%)	No. of data zones	Local share (%)	No. of data zones	Local share (%)
Clackmannanshire	64	2	3.1	2	3.1	4	6.3	9	14.1	10	15.6	15	23.4

**Table below** shows which data zones are within the 5, 10 and 15% most deprived areas in Scotland. From the table we can see which data zones were in the 15% most deprived in 2004 compared with 2006. In 2006 we have seen the inclusion of 5 further data zones which were not in the 15% most deprived areas in Scotland in 2004.

Datazone	Multi-Member Ward Area	2004	2006	5% MD 2006	10% MD 2006	15% MD 2006
S01000841	Clackmannanshire South	✓	✓	✓		
S01000836	Clackmannanshire South	✓	✓	✓		
S01000846	Clackmannanshire Central	✓	✓		✓	
S01000840	Clackmannanshire South	✓	✓		✓	
S01000837	Clackmannanshire South	✓	✓		✓	
S01000844*	Clackmannanshire Central					
S01000869	Clackmannanshire West	✓	✓		✓	
S01000868	Clackmannanshire West	✓	✓		✓	
S01000867	Clackmannanshire West	✓	✓		✓	
S01000866*	Clackmannanshire West		✓			✓
S01000870*	Clackmannanshire West		✓		✓	
S01000873*	Clackmannanshire West					
S01000874	Clackmannanshire North	✓	✓			✓
S01000865	Clackmannanshire Central	✓	✓			✓
S01000852	Clackmannanshire Central		✓			✓
S01000854	Clackmannanshire Central		✓			✓
S01000860	Clackmannanshire Central		✓			✓

\* These data zones were included in the ROA for reasons of community cohesion

Source: Scottish Index of Multiple Deprivation 2006

## Council Tax Bands - 2005

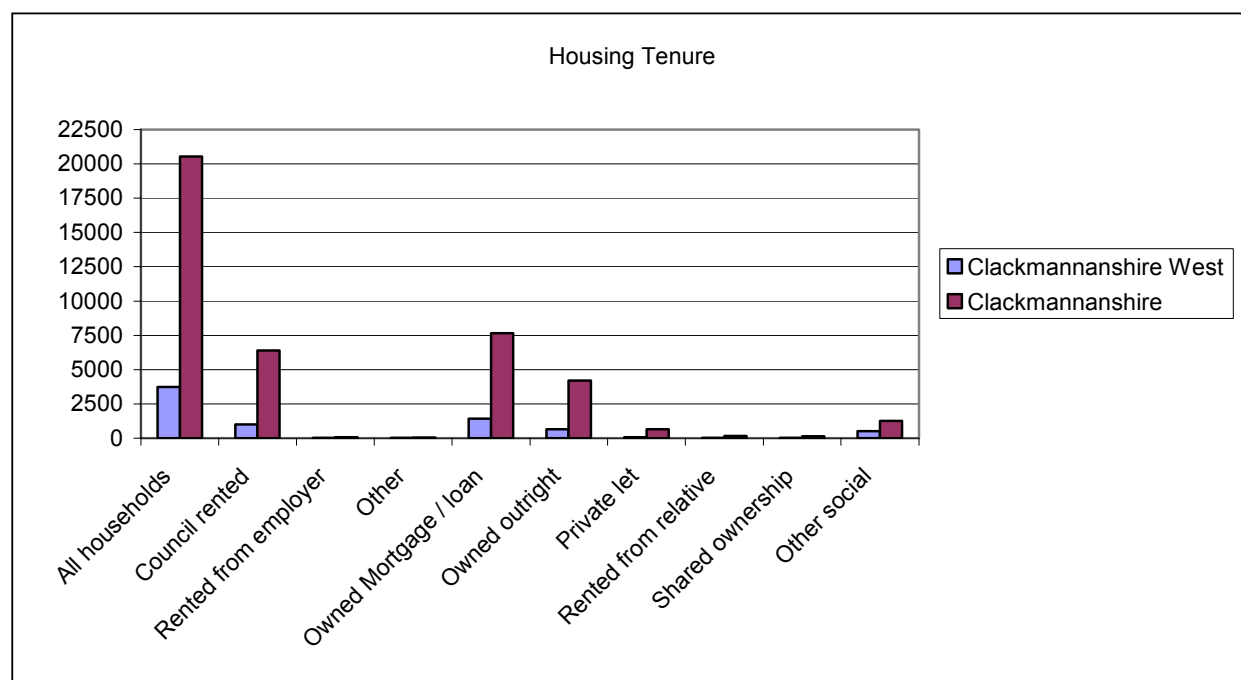
	Clackmannanshire West		Clackmannanshire
	Number	%	%
Council Tax Band A	1230	26.74	28.6
Council Tax Band A to C	3051	66.33	68.07
Council Tax Band F to H	558	12.13	9.12

**Number of dwellings per Hectare – 2.97**

**House sales mean price 2005 – 127,674**

## Housing Tenure

	Clackmannanshire West	Clackmannanshire West %	Clackmannanshire	Clackmannanshire %
All households	3728		20558	
Council rented	994	27%	6371	31%
Rented from employer	12	0.3%	72	0.4%
Other	15	0.4%	50	0.2%
Owned Mortgage / loan	1428	38%	7651	37%
Owned outright	661	18%	4197	20%
Private let	75	2%	654	3%
Rented from relative	20	0.5%	162	0.8%
Shared ownership	27	0.7%	147	0.7%
Other social	496	13%	1254	6%



SOURCE: Census 2001 © Crown Copyright

## **ECONOMIC Activity, Benefits and Tax Credits**

	<b>Clackmannanshire West</b>	<b>Clackmannanshire</b>
Percentage of population aged 16-24 claiming Jobseeker Allowance	5%	6.7%
Percentage of population aged 25-49 claiming Jobseeker Allowance	2.4%	2.8%
Percentage of population aged 50 to pensionable age claiming Jobseeker Allowance	1.2%	1.9%
Total Income Support Claimants	445	2340
Percentage of population aged 60 and over claiming guaranteed pension credits	18.7%	18.6%

SOURCE: HM Revenue and Customs / Department for Work and Pensions © Crown Copyright

## **Education**

	<b>Clackmannanshire West</b>	<b>Clackmannanshire</b>
Number of male pupils on the S4 roll 2004	73	292
Number of female pupils on the S4 roll 2004	68	279
Average Tariff score of male pupils on the S4 roll 2004	124	143
Average Tariff score of female pupils on the S4 roll 2004	168	180
Total number of pupils in primary 2005	973	4012
Total number of pupils in secondary 2005	733	3218
Primary percentage attendance rate 2005	94.17%	94.32%
Secondary percentage attendance rate 2005	89.74%	89.41%

SOURCE: Scottish School Census 2004 (September) / Scottish School Census 2005 (September)

## **Contact Details**

For further copies or information contact:

Clackmannanshire Council Research & Information Service  
Lime Tree House  
Alloa  
FK10 1EX  
Telephone: 01259 452365  
Email: [research@clacks.gov.uk](mailto:research@clacks.gov.uk)

You can access this information plus other Clackmannanshire Council information on:  
[www.clacks.gov.uk](http://www.clacks.gov.uk)

See also Scottish Neighbourhood Statistics web site [www.SNS.gov.uk](http://www.SNS.gov.uk)