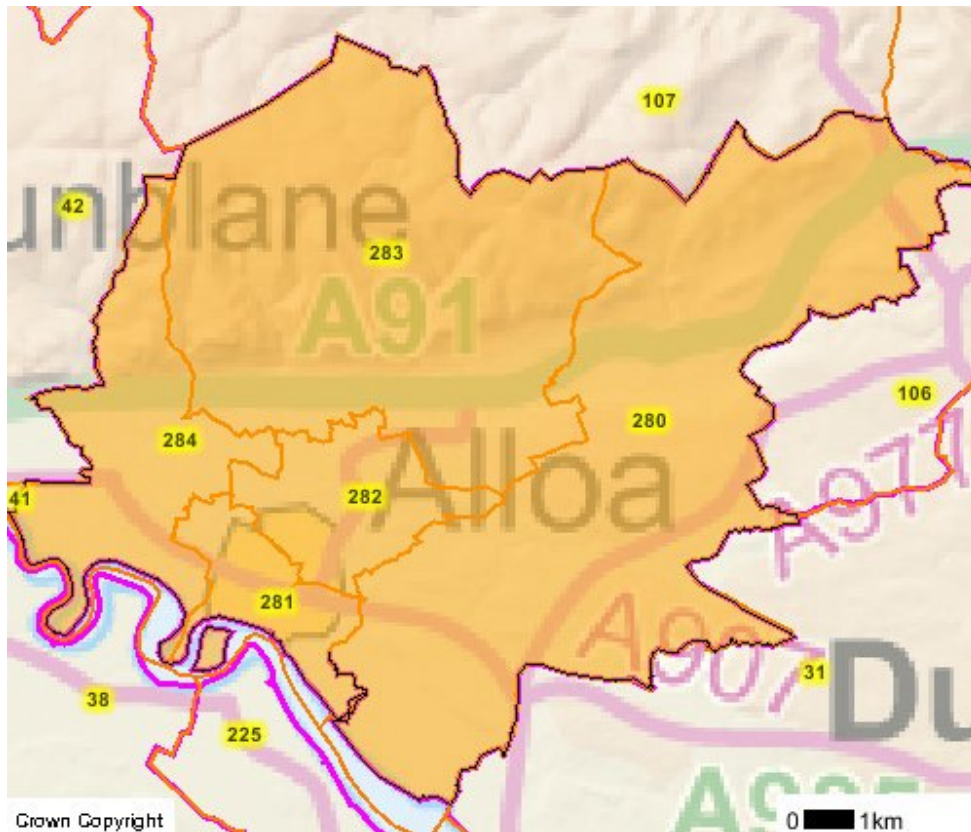


Clackmannanshire South

The following information has been compiled for the Wards of Clackmannanshire Council

CLACKMANNANSHIRE COUNCIL WARD BOUNDARIES

Map



Multi-member Ward	Multi-member Ward Code
Clackmannanshire Central	282
Clackmannanshire North	283
Clackmannanshire South	281
Clackmannanshire East	280
Clackmannanshire West	284

Clackmannanshire South

WARD ELECTORATE – 2007

Total: 8341

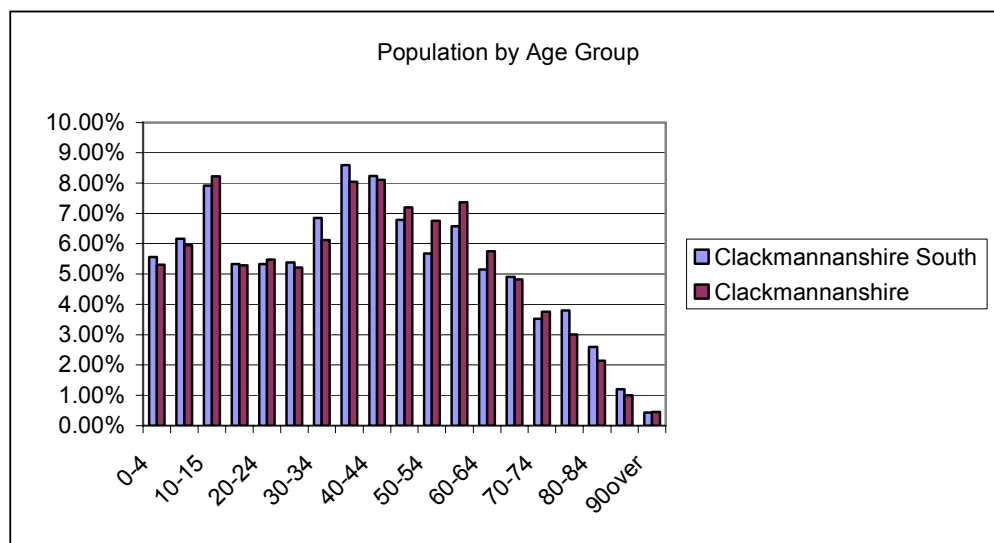
SOURCE: Electoral Registration Officer (ERO) Stirling

RESIDENT POPULATION – 2005 (GROS Mid year estimates 2005)

Males	5121	The 2001 census reported that 99.16% of Clackmannanshire's population was white. This compares to 97.99% for Scotland.
Females	5687	
Total	10808	

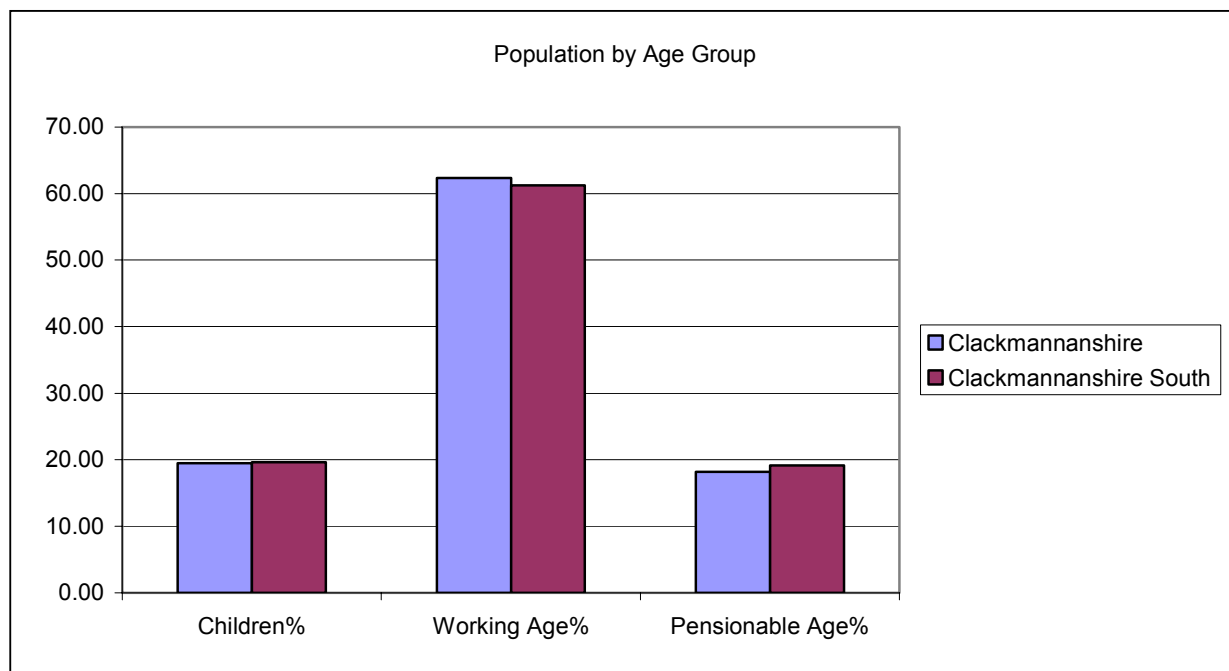
POPULATION PROFILE – 2005

Age Group	Clackmannanshire South		Clackmannanshire
	Number	%	%
0-4	601	5.56%	5.31%
5-9	666	6.16%	5.95%
10-15	855	7.91%	8.22%
16-19	576	5.33%	5.28%
20-24	576	5.33%	5.48%
25-29	582	5.38%	5.21%
30-34	740	6.85%	6.13%
35-39	929	8.60%	8.05%
40-44	890	8.23%	8.11%
45-49	733	6.78%	7.19%
50-54	613	5.67%	6.75%
55-59	711	6.58%	7.37%
60-64	557	5.15%	5.76%
65-69	530	4.90%	4.82%
70-74	381	3.53%	3.75%
75-79	411	3.80%	3.01%
80-84	280	2.59%	2.14%
85-89	130	1.20%	1.00%
90 over	47	0.43%	0.45%
Total	10808	100.00%	100.00%

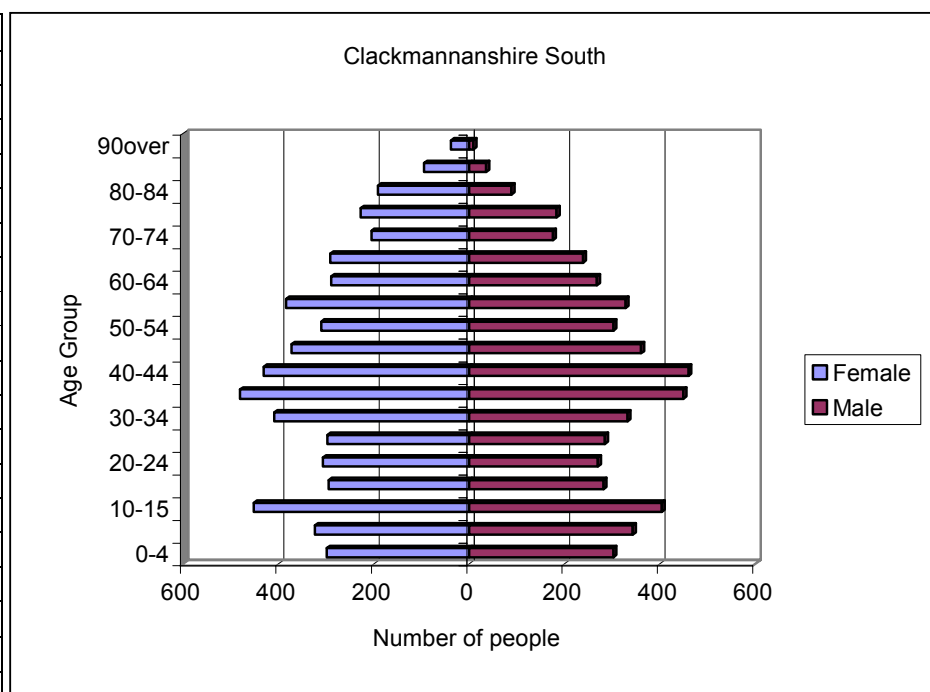


SOURCE: GROS Mid Year Population Estimate 2005 © Crown Copyright

Age Group	Clackmannanshire South		Clackmannanshire
	Number	%	%
Children	2122	19.63%	19.48%
Working Age	6618	62.99%	62.35%
Pensionable Age	2068	19.13%	18.17%
Total	10808	100%	100%



Age Group	Males	Females
0-4	303	298
5-9	343	323
10-15	404	451
16-19	282	294
20-24	270	306
25-29	285	297
30-34	332	408
35-39	449	480
40-44	460	430
45-49	361	372
50-54	303	310
55-59	328	383
60-64	268	289
65-69	239	291
70-74	176	205
75-79	184	227
80-84	89	191
85-89	36	94
90 over	9	38
Total	5121	5687



SOURCE: GROS Mid Year Population Estimate 2005 © Crown Copyright

Deprivation

Local Authority	No of data zones in LA	5% Most deprived data zones				10% Most deprived data zones				15% Most deprived data zones			
		SIMD 2004		SIMD 2006		SIMD 2004		SIMD 2006		SIMD 2004		SIMD 2006	
		No. of data zones	Local share (%)	No. of data zones	Local share (%)	No. of data zones	Local share (%)	No. of data zones	Local share (%)	No. of data zones	Local share (%)	No. of data zones	Local share (%)
Clackmannanshire	64	2	3.1	2	3.1	4	63	9	14.1	10	15.6	15	23.4

Table below shows which data zones are within the 5, 10 and 15% most deprived areas in Scotland. From the table we can see which data zones were in the 15% most deprived in 2004 compared with 2006. In 2006 we have seen the inclusion of 5 further data zones which were not in the 15% most deprived areas in Scotland in 2004.

Datazone	Multi-Member Ward Area	2004	2006	5% MD 2006	10% MD 2006	15% MD 2006
S01000841	Clackmannanshire South	✓	✓	✓		
S01000836	Clackmannanshire South	✓	✓	✓		
S01000846	Clackmannanshire Central	✓	✓		✓	
S01000840	Clackmannanshire South	✓	✓		✓	
S01000837	Clackmannanshire South	✓	✓		✓	
S01000844*	Clackmannanshire Central					
S01000869	Clackmannanshire West	✓	✓		✓	
S01000868	Clackmannanshire West	✓	✓		✓	
S01000867	Clackmannanshire West	✓	✓		✓	
S01000866*	Clackmannanshire West		✓			✓
S01000870*	Clackmannanshire West		✓		✓	
S01000873*	Clackmannanshire West					
S01000874	Clackmannanshire North	✓	✓			✓
S01000865	Clackmannanshire Central	✓	✓			✓
S01000852	Clackmannanshire Central		✓			✓
S01000854	Clackmannanshire Central		✓			✓
S01000860	Clackmannanshire Central		✓			✓

* These data zones were included in the ROA for reasons of community cohesion

Source: Scottish Index of Multiple Deprivation 2006

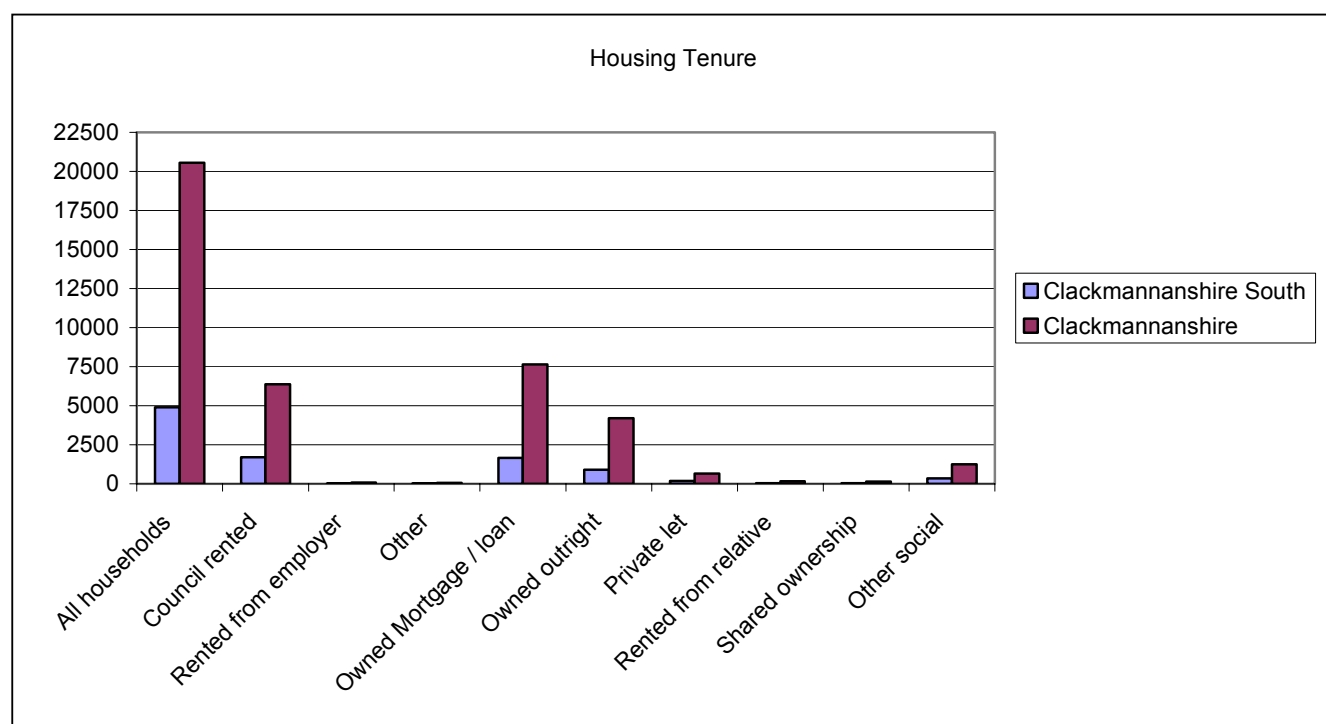
Council Tax Bands - 2005

	Clackmannanshire South		Clackmannanshire
	Number	%	%
Council Tax Band A	1705	31.5	28.6
Council Tax Band A to C	4074	75.26	68.07
Council Tax Band F to H	252	4.66	9.12

Number of dwellings per Hectare – 8.18
House sales mean price 2005 – 85,632

Housing Tenure

	Clackmannanshire South	Clackmannanshire South %	Clackmannanshire	Clackmannanshire %
All households	4906		20558	
Council rented	1719	35%	6371	31%
Rented from employer	16	0.3%	72	0.4%
Other	16	0.3%	50	0.2%
Owned Mortgage / loan	1654	34%	7651	37%
Owned outright	888	18%	4197	20%
Private let	187	4%	654	3%
Rented from relative	30	0.6%	162	0.8%
Shared ownership	45	0.9%	147	0.7%
Other social	351	7%	1254	6%



SOURCE: Census 2001 © Crown Copyright

ECONOMIC Activity, Benefits and Tax Credits

	Clackmannanshire South	Clackmannanshire
Percentage of population aged 16-24 claiming Jobseeker Allowance	9.1%	6.7%
Percentage of population aged 25-49 claiming Jobseeker Allowance	3.4%	2.8%
Percentage of population aged 50 to pensionable age claiming Jobseeker Allowance	3.1%	1.9%
Total Income Support Claimants	705	2340
Percentage of population aged 60 and over claiming guaranteed pension credits	22.7%	18.6%

SOURCE: HM Revenue and Customs / Department for Work and Pensions © Crown Copyright

Education

	Clackmannanshire South	Clackmannanshire
Number of male pupils on the S4 roll 2004	47	292
Number of female pupils on the S4 roll 2004	51	279
Average Tariff score of male pupils on the S4 roll 2004	140	143
Average Tariff score of female pupils on the S4 roll 2004	173	180
Total number of pupils in primary 2005	941	4012
Total number of pupils in secondary 2005	727	3218
Primary percentage attendance rate 2005	94.01%	94.32%
Secondary percentage attendance rate 2005	89.20%	89.41%

SOURCE: Scottish School Census 2004 (September) / Scottish School Census 2005 (September)

Contact Details

For further copies or information contact:

Clackmannanshire Council Research & Information Service
Lime Tree House
Alloa
FK10 1EX
Telephone: 01259 452365
Email: research@clacks.gov.uk

You can access this information plus other Clackmannanshire Council information on:
www.clacks.gov.uk

See also Scottish Neighbourhood Statistics web site www.SNS.gov.uk