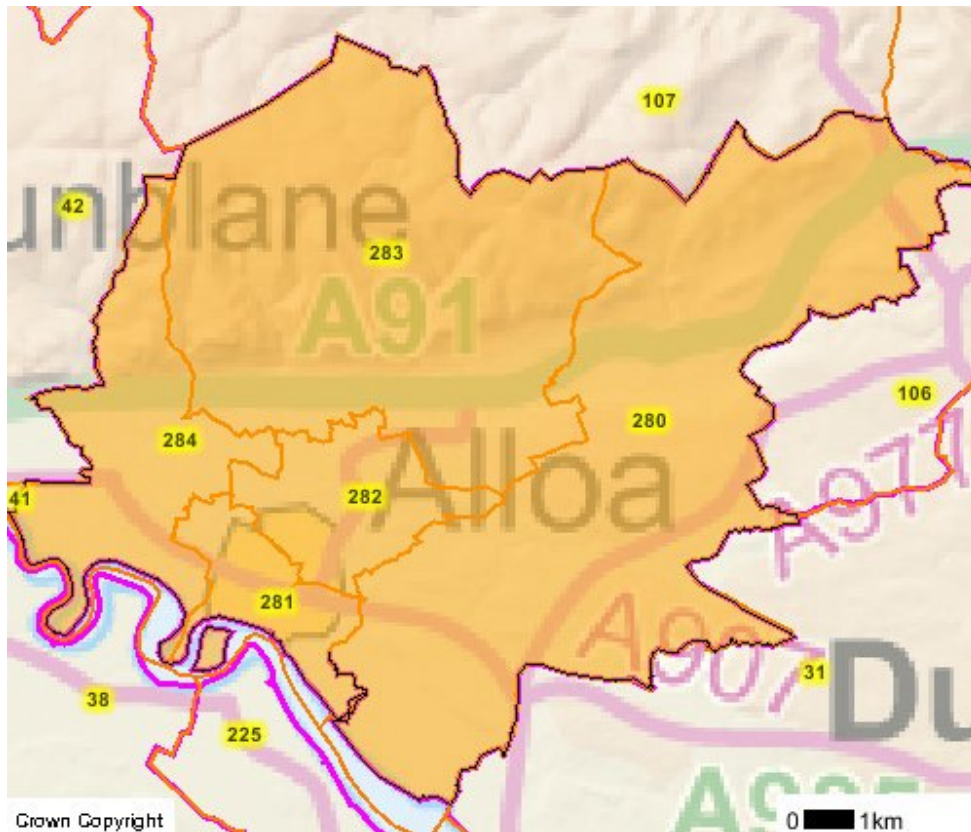


Clackmannanshire North

The following information has been compiled for the Wards of Clackmannanshire Council

CLACKMANNANSHIRE COUNCIL WARD BOUNDARIES

Map



Multi-member Ward	Multi-member Ward Code
Clackmannanshire Central	282
Clackmannanshire North	283
Clackmannanshire South	281
Clackmannanshire East	280
Clackmannanshire West	284

Clackmannanshire North

WARD ELECTORATE – 2007

Total: 8473

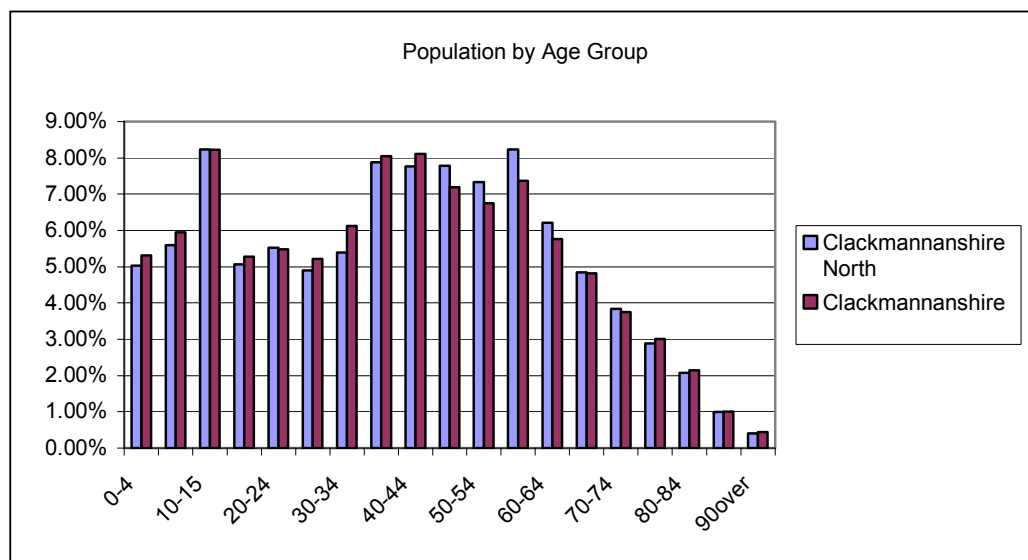
SOURCE: Electoral Registration Officer (ERO) Stirling

RESIDENT POPULATION – 2005 (GROS Mid year estimates 2005)

Males	5529	The 2001 census reported that 99.16% of Clackmannanshire's population was white. This compares to 97.99% for Scotland.
Females	5830	
Total	11359	

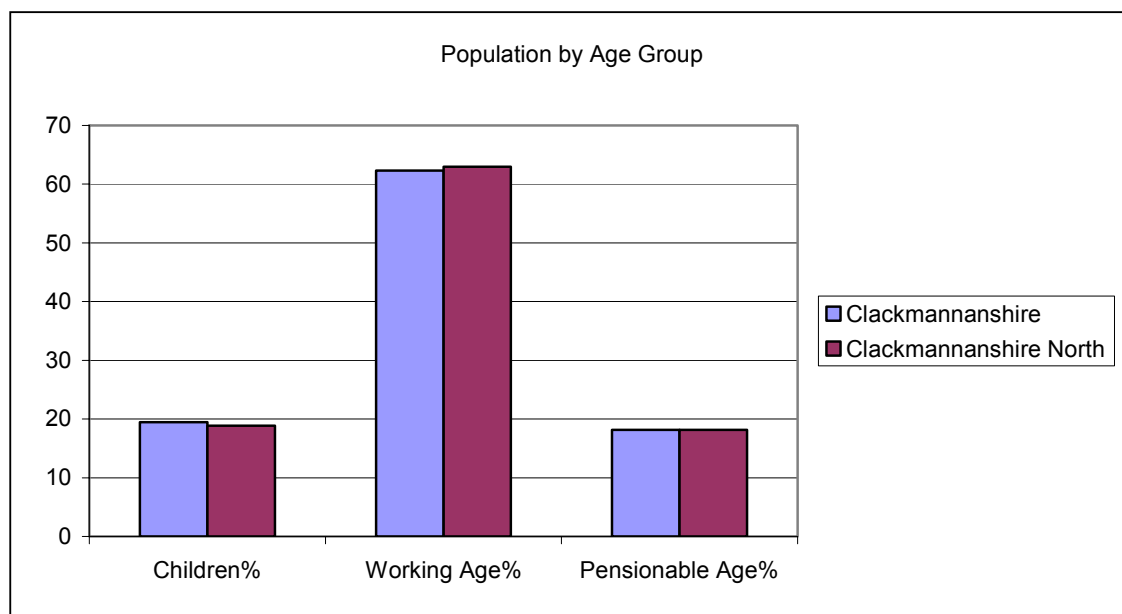
POPULATION PROFILE – 2005

Age Group	Clackmannanshire North		Clackmannanshire
	Number	%	%
0-4	572	5.04%	5.31%
5-9	636	5.60%	5.95%
10-15	936	8.24%	8.22%
16-19	575	5.06%	5.28%
20-24	628	5.53%	5.48%
25-29	556	4.89%	5.21%
30-34	612	5.39%	6.13%
35-39	895	7.88%	8.05%
40-44	882	7.76%	8.11%
45-49	884	7.78%	7.19%
50-54	832	7.32%	6.75%
55-59	936	8.24%	7.37%
60-64	706	6.22%	5.76%
65-69	550	4.84%	4.82%
70-74	436	3.84%	3.75%
75-79	328	2.89%	3.01%
80-84	236	2.08%	2.14%
85-89	113	0.99%	1.00%
90 over	46	0.40%	0.45%
Total	11359	100.00%	100.00%

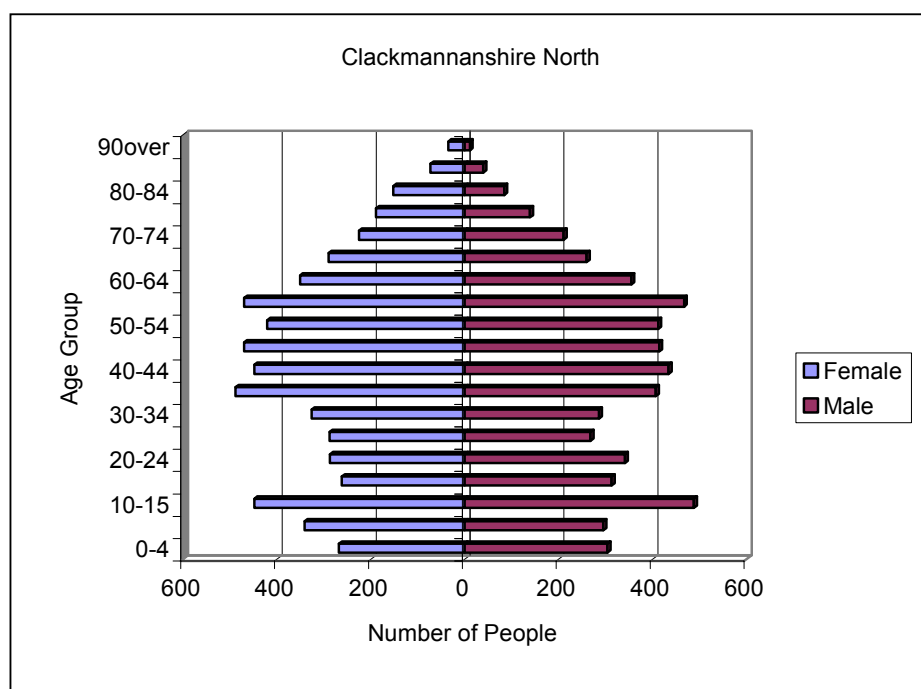


SOURCE: GROS Mid Year Population Estimate 2005 © Crown Copyright

Age Group	Clackmannanshire North		Clackmannanshire
	Number	%	%
Children	2144	18.87	19.48%
Working Age	7155	62.99	62.35%
Pensionable Age	2060	18.14	18.17%
Total	11,359	100%	100%



Age Group	Males	Females
0-4	304	268
5-9	295	341
10-15	488	448
16-19	313	262
20-24	341	287
25-29	268	288
30-34	286	326
35-39	407	488
40-44	434	448
45-49	414	470
50-54	412	420
55-59	467	469
60-64	355	351
65-69	260	290
70-74	211	225
75-79	139	189
80-84	84	152
85-89	40	73
90 over	11	35
Total	5529	5830



SOURCE: GROS Mid Year Population Estimate 2005 © Crown Copyright

Deprivation

Local Authority	No of data zones in LA	5% Most deprived data zones				10% Most deprived data zones				15% Most deprived data zones			
		SIMD 2004		SIMD 2006		SIMD 2004		SIMD 2006		SIMD 2004		SIMD 2006	
		No. of data zones	Local share (%)	No. of data zones	Local share (%)	No. of data zones	Local share (%)	No. of data zones	Local share (%)	No. of data zones	Local share (%)	No. of data zones	Local share (%)
Clackmannanshire	64	2	3.1	2	3.1	4	63	9	14.1	10	15.6	15	23.4

Table below shows which data zones are within the 5, 10 and 15% most deprived areas in Scotland. From the table we can see which data zones were in the 15% most deprived in 2004 compared with 2006. In 2006 we have seen the inclusion of 5 further data zones which were not in the 15% most deprived areas in Scotland in 2004.

Datazone	Multi-Member Ward Area	2004	2006	5% MD 2006	10% MD 2006	15% MD 2006
S01000841	Clackmannanshire South	✓	✓	✓		
S01000836	Clackmannanshire South	✓	✓	✓		
S01000846	Clackmannanshire Central	✓	✓		✓	
S01000840	Clackmannanshire South	✓	✓		✓	
S01000837	Clackmannanshire South	✓	✓		✓	
S01000844*	Clackmannanshire Central					
S01000869	Clackmannanshire West	✓	✓		✓	
S01000868	Clackmannanshire West	✓	✓		✓	
S01000867	Clackmannanshire West	✓	✓		✓	
S01000866*	Clackmannanshire West		✓			✓
S01000870*	Clackmannanshire West		✓		✓	
S01000873*	Clackmannanshire West					
S01000874	Clackmannanshire North	✓	✓			✓
S01000865	Clackmannanshire Central	✓	✓			✓
S01000852	Clackmannanshire Central		✓			✓
S01000854	Clackmannanshire Central		✓			✓
S01000860	Clackmannanshire Central		✓			✓

* These data zones were included in the ROA for reasons of community cohesion

Source: Scottish Index of Multiple Deprivation 2006

Council Tax Bands - 2005

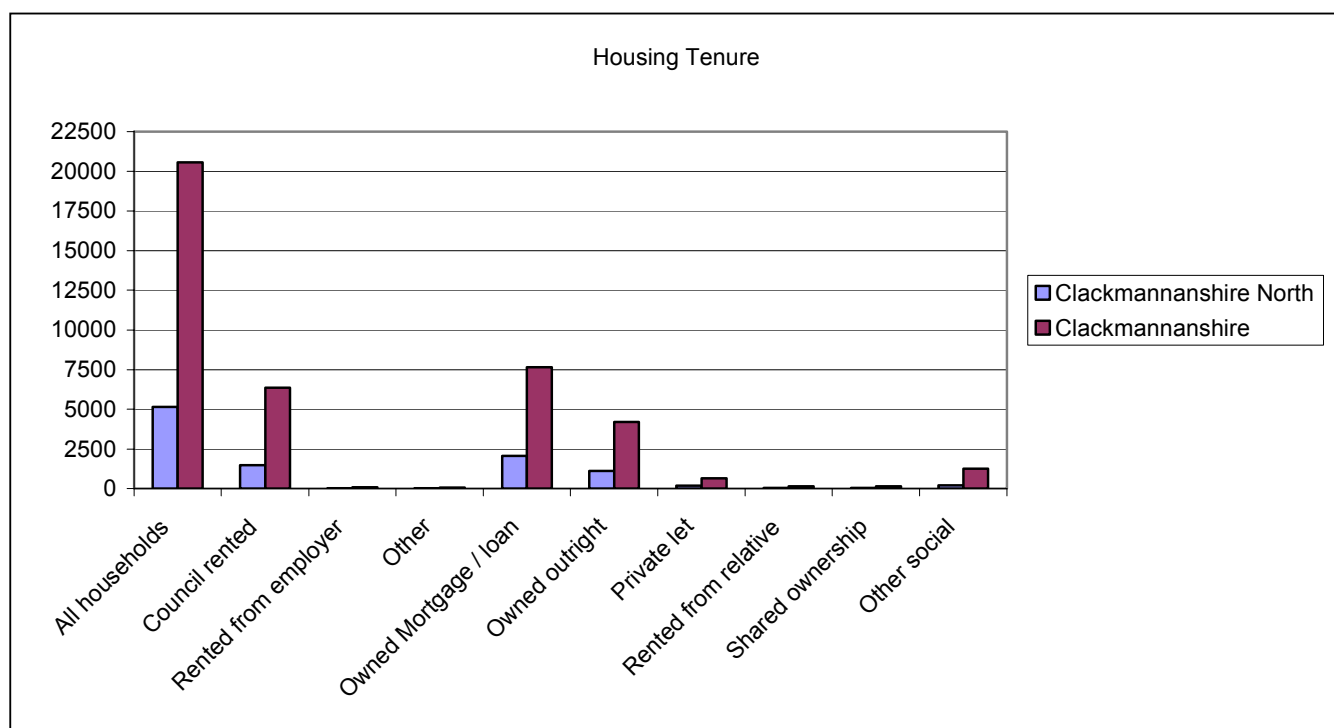
	Clackmannanshire North		Clackmannanshire
	Number	%	%
Council Tax Band A	1577	29.53	28.6
Council Tax Band A to C	3514	65.81	68.07
Council Tax Band F to H	357	6.69	9.12

Number of dwellings per Hectare – 0.85

House sales mean price 2005 – 83,170

Housing Tenure

	Clackmannanshire North	Clackmannanshire North %	Clackmannanshire	Clackmannanshire %
All households	5151		20558	
Council rented	1472	29%	6371	31%
Rented from employer	10	0.2%	72	0.4%
Other	10	0.2%	50	0.2%
Owned Mortgage / loan	2059	40%	7651	37%
Owned outright	1117	22%	4197	20%
Private let	188	4%	654	3%
Rented from relative	43	0.8%	162	0.8%
Shared ownership	31	0.6%	147	0.7%
Other social	221	4%	1254	6%



SOURCE: Census 2001 © Crown Copyright

ECONOMIC Activity, Benefits and Tax Credits

	Clackmannanshire North	Clackmannanshire
Percentage of population aged 16-24 claiming Jobseeker Allowance	5.4%	6.7%
Percentage of population aged 25-49 claiming Jobseeker Allowance	3%	2.8%
Percentage of population aged 50 to pensionable age claiming Jobseeker Allowance	1.9%	1.9%
Total Income Support Claimants	415	2340
Percentage of population aged 60 and over claiming guaranteed pension credits	16.6%	18.6%

SOURCE: HM Revenue and Customs / Department for Work and Pensions © Crown Copyright

Education

	Clackmannanshire North	Clackmannanshire
Number of male pupils on the S4 roll 2004	74	292
Number of female pupils on the S4 roll 2004	68	279
Average Tariff score of male pupils on the S4 roll 2004	148	143
Average Tariff score of female pupils on the S4 roll 2004	196	180
Total number of pupils in primary 2005	870	4012
Total number of pupils in secondary 2005	796	3218
Primary percentage attendance rate 2005	94.53%	94.32%
Secondary percentage attendance rate 2005	89.54%	89.41%

SOURCE: Scottish School Census 2004 (September) / Scottish School Census 2005 (September)

Contact Details

For further copies or information contact:

Clackmannanshire Council Research & Information Service
Lime Tree House
Alloa
FK10 1EX
Telephone: 01259 452365
Email: research@clacks.gov.uk

You can access this information plus other Clackmannanshire Council information on:
www.clacks.gov.uk

See also Scottish Neighbourhood Statistics web site www.SNS.gov.uk