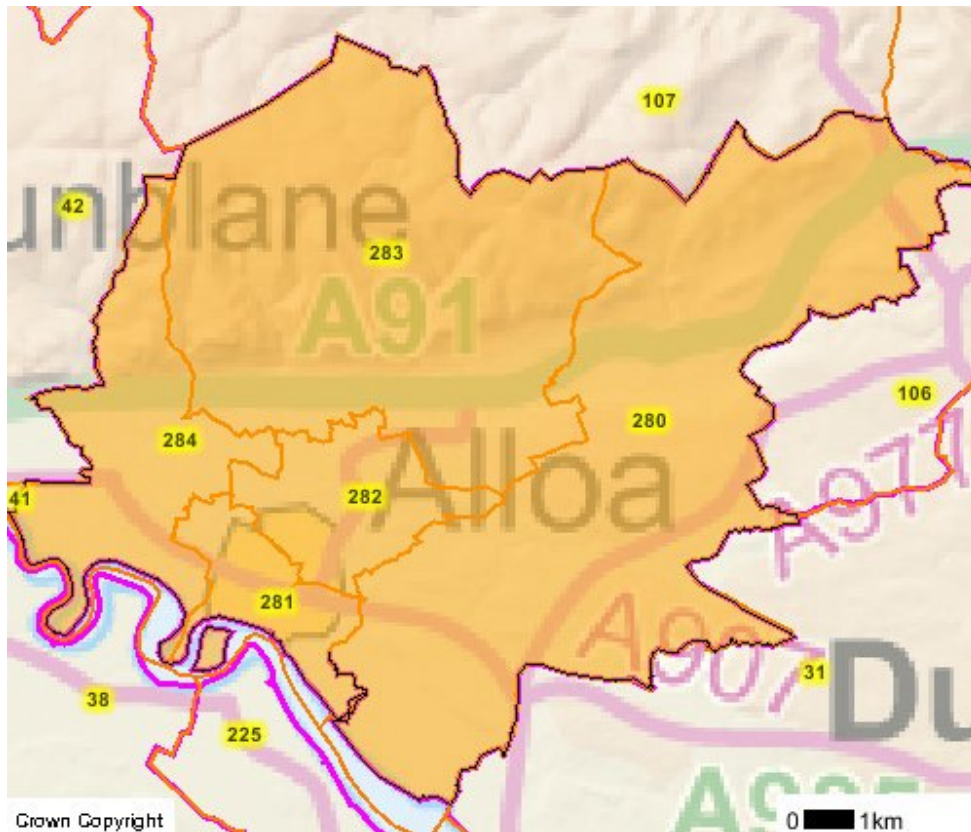


### Clackmannanshire East

The following information has been compiled for the Wards of Clackmannanshire Council

#### CLACKMANNANSHIRE COUNCIL WARD BOUNDARIES

### Map



Multi-member Ward	Multi-member Ward Code
Clackmannanshire Central	282
Clackmannanshire North	283
Clackmannanshire South	281
Clackmannanshire East	280
Clackmannanshire West	284

## Clackmannanshire East

### WARD ELECTORATE – 2007

Total: 5588

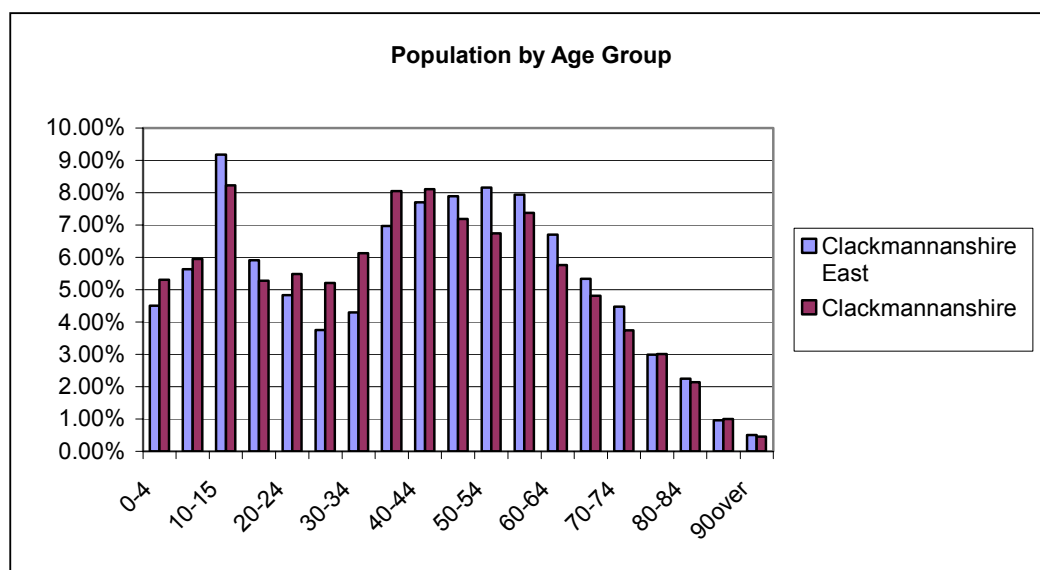
SOURCE: Electoral Registration Officer (ERO) Stirling

### RESIDENT POPULATION – 2005 (GROS Mid year estimates 2005)

Males	3545	The 2001 census reported that 99.16% of Clackmannanshire's population was white. This compares to 97.99% for Scotland.
Females	3840	
<b>Total</b>	<b>7385</b>	

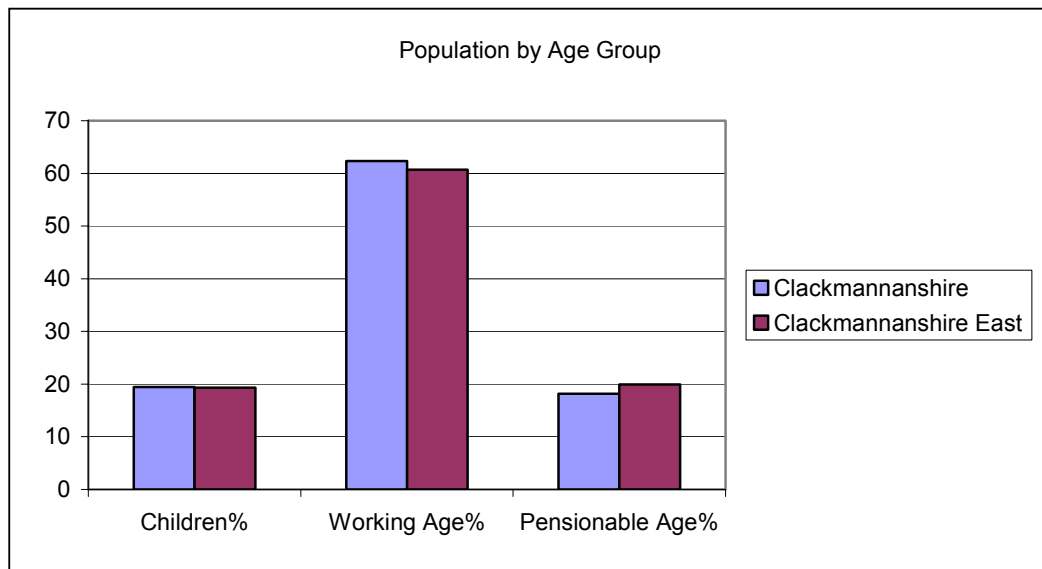
### POPULATION PROFILE – 2005

Age Group	Clackmannanshire East		Clackmannanshire
	Number	%	%
0-4	333	4.51%	5.31%
5-9	416	5.63%	5.95%
10-15	678	9.18%	8.22%
16-19	436	5.90%	5.28%
20-24	357	4.83%	5.48%
25-29	277	3.75%	5.21%
30-34	317	4.29%	6.13%
35-39	515	6.97%	8.05%
40-44	569	7.70%	8.11%
45-49	583	7.89%	7.19%
50-54	602	8.15%	6.75%
55-59	587	7.95%	7.37%
60-64	495	6.70%	5.76%
65-69	394	5.34%	4.82%
70-74	331	4.48%	3.75%
75-79	221	2.99%	3.01%
80-84	166	2.25%	2.14%
85-89	71	0.96%	1.00%
90 over	37	0.50%	0.45%
<b>Total</b>	<b>7385</b>	<b>100.00%</b>	<b>100.00%</b>

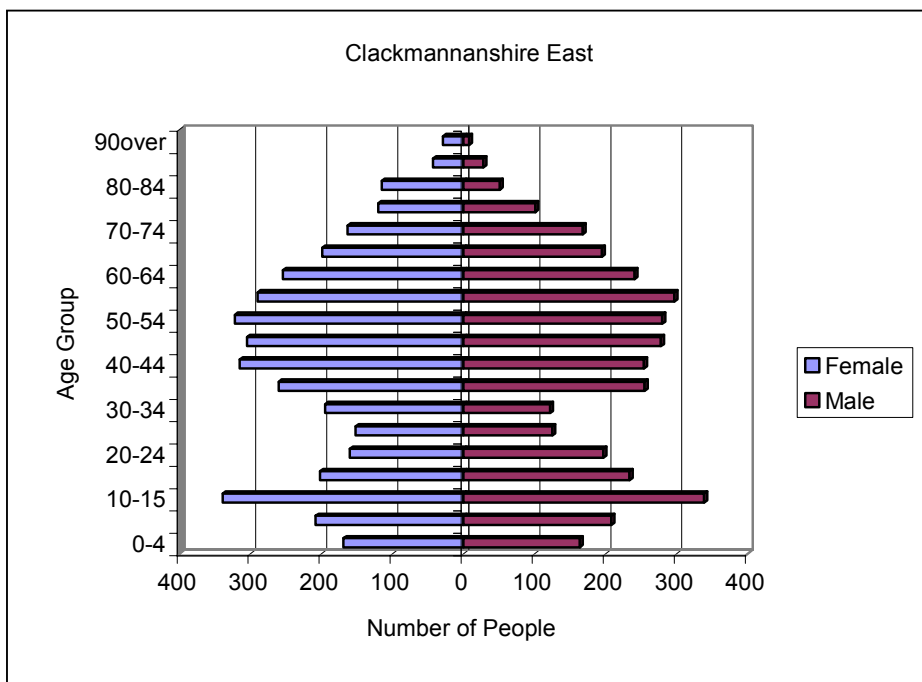


SOURCE: GROS Mid Year Population Estimate 2005 © Crown Copyright

Age Group	Clackmannanshire East		Clackmannanshire
	Number	%	%
Children	1427	19.32	19.48%
Working Age	4484	60.72	62.35%
Pensionable Age	1474	19.96	18.17%
<b>Total</b>	<b>7385</b>	<b>100%</b>	<b>100%</b>



Age Group	Males	Females
0-4	164	169
5-9	208	208
10-15	339	339
16-19	234	202
20-24	197	160
25-29	125	152
30-34	122	195
35-39	255	260
40-44	254	315
45-49	278	305
50-54	280	322
55-59	297	290
60-64	241	254
65-69	195	199
70-74	168	163
75-79	101	120
80-84	51	115
85-89	28	43
90 over	8	29
<b>Total</b>	<b>3545</b>	<b>3840</b>



SOURCE: GROS Mid Year Population Estimate 2005 © Crown Copyright

## Deprivation

Local Authority	No of data zones in LA	5% Most deprived data zones				10% Most deprived data zones				15% Most deprived data zones			
		SIMD 2004		SIMD 2006		SIMD 2004		SIMD 2006		SIMD 2004		SIMD 2006	
		No. of data zones	Local share (%)	No. of data zones	Local share (%)	No. of data zones	Local share (%)	No. of data zones	Local share (%)	No. of data zones	Local share (%)	No. of data zones	Local share (%)
Clackmannanshire	64	2	3.1	2	3.1	4	63	9	14.1	10	15.6	15	23.4

**Table below** shows which data zones are within the 5, 10 and 15% most deprived areas in Scotland. From the table we can see which data zones were in the 15% most deprived in 2004 compared with 2006. In 2006 we have seen the inclusion of 5 further data zones which were not in the 15% most deprived areas in Scotland in 2004.

Datazone	Multi-Member Ward Area	2004	2006	5% MD 2006	10% MD 2006	15% MD 2006
S01000841	Clackmannanshire South	✓	✓	✓		
S01000836	Clackmannanshire South	✓	✓	✓		
S01000846	Clackmannanshire Central	✓	✓		✓	
S01000840	Clackmannanshire South	✓	✓		✓	
S01000837	Clackmannanshire South	✓	✓		✓	
S01000844*	Clackmannanshire Central					
S01000869	Clackmannanshire West	✓	✓		✓	
S01000868	Clackmannanshire West	✓	✓		✓	
S01000867	Clackmannanshire West	✓	✓		✓	
S01000866*	Clackmannanshire West		✓			✓
S01000870*	Clackmannanshire West		✓		✓	
S01000873*	Clackmannanshire West					
S01000874	Clackmannanshire North	✓	✓			✓
S01000865	Clackmannanshire Central	✓	✓			✓
S01000852	Clackmannanshire Central		✓			✓
S01000854	Clackmannanshire Central		✓			✓
S01000860	Clackmannanshire Central		✓			✓

\* These data zones were included in the ROA for reasons of community cohesion

Source: Scottish Index of Multiple Deprivation 2006

## Council Tax Bands - 2005

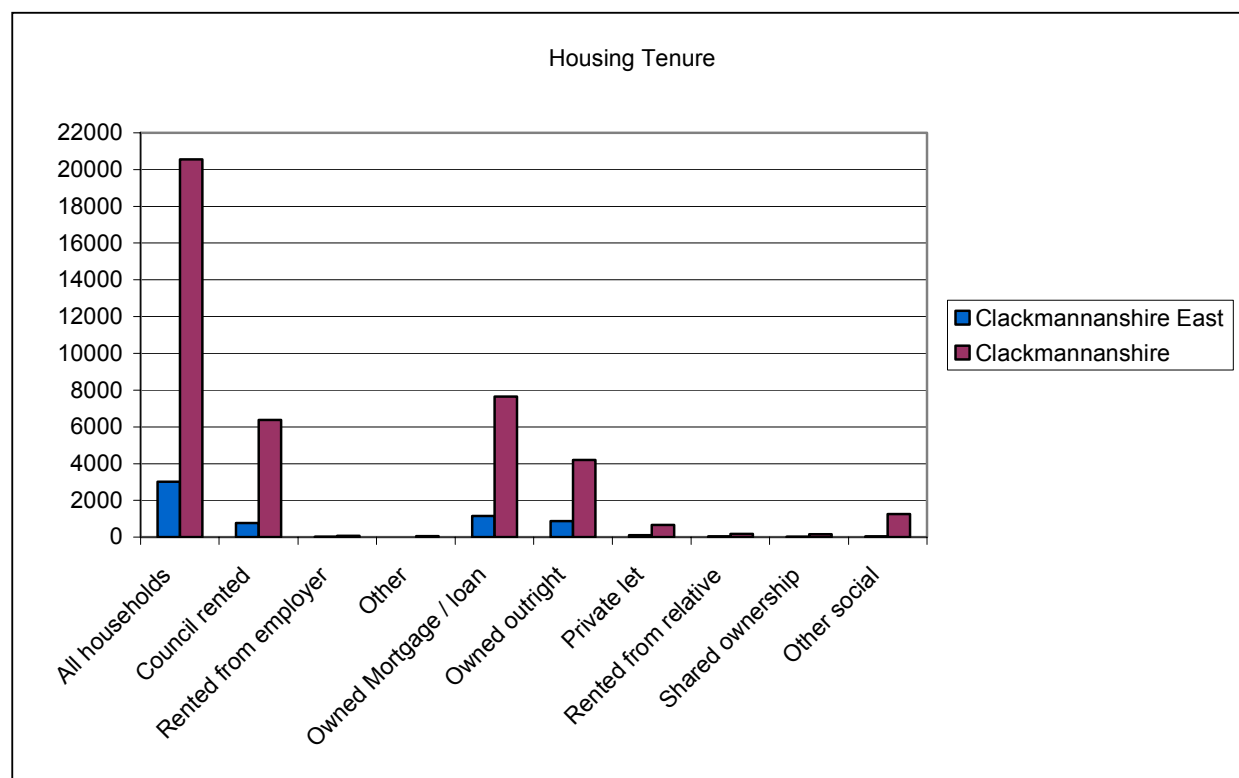
	Clackmannanshire East		Clackmannanshire
	Number	%	%
Council Tax Band A	519	16.26	28.6
Council Tax Band A to C	1551	48.59	68.07
Council Tax Band F to H	753	23.59	9.12

**Number of dwellings per Hectare – 0.52**

**House sales mean price 2005 – 136,282**

## Housing Tenure

	Clackmannanshire East	Clackmannanshire East %	Clackmannanshire	Clackmannanshire %
All households	3021		20558	
Council rented	760	25%	6371	31%
Rented from employer	24	0.8%	72	0.4%
Other	7	0.2%	50	0.2%
Owned Mortgage / loan	1159	38%	7651	37%
Owned outright	889	29%	4197	20%
Private let	102	3%	654	3%
Rented from relative	32	1%	162	0.8%
Shared ownership	19	0.6%	147	0.7%
Other social	29	1%	1254	6%



SOURCE: Census 2001 © Crown Copyright

## **ECONOMIC Activity, Benefits and Tax Credits**

	<b>Clackmannanshire East</b>	<b>Clackmannanshire</b>
Percentage of population aged 16-24 claiming Jobseeker Allowance	5%	6.7%
Percentage of population aged 25-49 claiming Jobseeker Allowance	1.8%	2.8%
Percentage of population aged 50 to pensionable age claiming Jobseeker Allowance	1.4%	1.9%
Total Income Support Claimants	210	2340
Percentage of population aged 60 and over claiming guaranteed pension credits	13.1%	18.6%

SOURCE: HM Revenue and Customs / Department for Work and Pensions © Crown Copyright

## **Education**

	<b>Clackmannanshire East</b>	<b>Clackmannanshire</b>
Number of male pupils on the S4 roll 2004	41	292
Number of female pupils on the S4 roll 2004	35	279
Average Tariff score of male pupils on the S4 roll 2004	157	143
Average Tariff score of female pupils on the S4 roll 2004	205	180
Total number of pupils in primary 2005	502	4012
Total number of pupils in secondary 2005	416	3218
Primary percentage attendance rate 2005	95.27%	94.32%
Secondary percentage attendance rate 2005	90.24%	89.41%

SOURCE: Scottish School Census 2004 (September) / Scottish School Census 2005 (September)

## **Contact Details**

For further copies or information contact:

Clackmannanshire Council Research & Information Service  
Lime Tree House  
Alloa  
FK10 1EX  
Telephone: 01259 452365  
Email: [research@clacks.gov.uk](mailto:research@clacks.gov.uk)

You can access this information plus other Clackmannanshire Council information on:  
[www.clacks.gov.uk](http://www.clacks.gov.uk)

See also Scottish Neighbourhood Statistics web site [www.SNS.gov.uk](http://www.SNS.gov.uk)