

Strategic Environmental Assessment  
of  
**The Clackmannanshire and Stirling Structure  
Plan 2002: Alteration No. 3**

Draft Scoping Report

Clackmannanshire and Stirling Councils, May 2006

# Contents

- 1. Introduction**
  - 1.1 What is SEA?
  - 1.2 Structure Plan Alteration
  - 1.3 Requirement for and Aim of the SEA
  - 1.4 Report Structure
  
- 2. Scope & Timescales**
  - 2.1 Purpose of the Scoping Report
  - 2.2 Scoping Considerations
  - 2.3 Key Stages and programme
  
- 3. Defining Environmental Objectives**
  - 3.1 Identifying Relevant Environmental Objectives
  - 3.2 Review of relevant Plans, Programmes and Policies
  - 3.2 Refining Objectives to reflect scope of alteration
  - 3.3 Locally Significant Environmental Issues.
  
- 4. Methodology**
  - 4.1 Objective testing
  - 4.2 Baseline summary
  - 4.3 Assessment
  - 4.4 Reasonable Alternatives
  
- 5. Environment Report**
  - 5.1 Draft Contents
  - 5.2 Consultation
  - 5.3 Monitoring
  - 5.4 Consultation Questions

## Appendices

**Appendix 1:** Natura 2000 Sites

**Appendix 2:** Draft SEA Objectives.

**Appendix 3:** Review of Plans, Programmes and Policies relevant to the Clackmannanshire and Stirling Structure Plan No. 3 – Housing and related issues.

**Appendix 4 :** Scoping of SEA Issues

## 1. Introduction

### 1.1 What is SEA?

1.1.1 The requirement to undertake Strategic Environmental Assessment (SEA) is established by the European Directive 2001/42/EC, 'the Assessment of the Effects of Certain Plans and Programmes on the Environment' (the SEA Directive). SEA was introduced into Scottish legislation through the Environmental Assessment of Plans and Programmes (Scotland) Regulations (the 2004 Regulations). These Regulations came into force on 20 July 2004. The Environmental Assessment (Scotland) Act 2005 extends the scope of the earlier Regulations to cover all policies, plans and programmes and came into force on 20<sup>th</sup> February 2006. However, the earlier Regulations will continue to apply to plans and programmes whose first formal preparatory act was on or before 19<sup>th</sup> February 2006.

1.1.2 The objective of SEA is to:

*'Provide for a high level of protection of the environment and to contribute to the integration of environmental considerations into the preparation and adoption of plans and programmes with a view to promoting sustainable development'*

(Article 1 of the SEA Directive).

1.1.3 SEA provides plan-making authorities with a process to incorporate environmental considerations into decision-making at an early stage and in an integrated way. The SEA Directive requires the preparation of an Environmental Report which sets out the likely significant effects on the environment of implementing the draft plan. The first stages in developing the Environment Report are to set the context and objectives, establish the baseline and decide on the scope of the report – information drawn together in a scoping report.

### 1.2 Structure Plan Alteration

1.2.1 The Clackmannanshire and Stirling Structure Plan was approved by Scottish Ministers in 2002 and contained a commitment to review the housing land requirement at five yearly intervals. The need for such review has increased since the release of more current population and housing projections than the 1996 figures upon which the 2002 Plan was based. A Third Alteration to the Structure Plan is therefore proposed and an SEA will be required to examine the likely significant environmental effects of the proposed changes. Proposed changes focus on housing land allocations, rural development, economic and retail policies/proposals, minerals and waste. ( Please refer to supporting information- Issues Report, Housing 2025, Rural Development, Minerals, Waste, Environment, Economic and Shopping Topic Papers which outline the scope of the review and the issues to be addressed).

### 1.3 Requirement for and Aim of the SEA

1.3.1 In terms of SEA Regulation 8, the formal preparation of the Clackmannanshire and Stirling Structure Plan 2002: Alteration No. 3, Housing and related issues, began after 20<sup>th</sup> July 2004, but before 20<sup>th</sup> February 2006. In terms of Regulations 9 and 14, the Plan is prepared for Town and Country planning purposes and is likely to have significant environmental effects. Its preparation therefore falls within the requirements of the 2004 Regulations and is subject to SEA.

1.3.2 The Regulations also require an assessment on whether the Structure Plan Alteration will affect 'Natura 2000' sites. As there are 'Natura 2000' sites within the Structure Plan area the SEA process will consider and consult on the impact on these sites of any changes to the Plan (see Appendix 1).

1.3.3 The overall aim of this SEA will be to insure that all relevant environmental issues are considered as an integral part of the process towards approval of the Clackmannanshire and Stirling Structure Plan, 2025 Third Alteration (3<sup>rd</sup> SPA).

## **1.4 Report Structure**

1.4.1 Part 2 of this report sets out the purpose of this scoping report, the key stages of the SEA process and its programme.

1.4.2 Part 3 Focuses on the objectives against which the Plan will be assessed discussing how these have been derived and how they relate to the relevant environmental factors against which the plan will be assessed.

1.4.3 Part 4 This section sets out the proposed approach to carrying out the assessment including development of a matrix to test alternatives, policies and proposals against each other and against the relevant environmental objectives.

1.4.4 Part 5 Describes the proposed content of the environment report, the role of consultation through the process and the approach to future monitoring.

## **2. Scope and Timescales**

### **2.1 Purpose of the Scoping Report**

2.1.1 Scoping is the process of deciding the scope and level of detail of a SEA and includes the environmental effects and alternatives which need to be considered, the assessment methods to be used, and the structure and contents of the Environment Report. This report presents the findings of the scoping task.

2.1.2 The purpose of this scoping report is to:

- scope out the requirements for a formal SEA of the draft 3<sup>rd</sup> SPA in consultation with the public and consultation authorities, in compliance with relevant legislation, national guidance and best practice;
- present options for the 3<sup>rd</sup> SPA, taking into account its objectives and geographical scope;
- use this process to identify and promote all potential opportunities for sustainable development through delivery of the 3<sup>rd</sup> SPA;
- identify means of mitigating potential negative impacts of the 3<sup>rd</sup> SPA on the sustainability of the area;
- build upon the SEA of the 3<sup>rd</sup> SPA to ensure an integrated and consistent approach to sustainable housing provision within the area.

2.1.3 The scoping report seeks to provide an introduction to the context of the assessment, explain the process and then present the approach by which the main alternative options are to be developed as part of the SEA process.

### **2.2 Scoping Considerations**

2.2.1 In scoping the SEA it is important to be aware of the spatial sphere of influence of the Clackmannanshire and Stirling Structure Plan, the timeframe it covers and the relevant range of environmental topics against which any relevant significant effects should be assessed.

2.2.3 The study area for the SEA is defined by the joint Council boundaries of Clackmannanshire and Stirling. It is also possible that the impacts of the Plan could extend beyond the boundaries of the Structure plan area. The current Structure Plan covers the period up to 2017 but this Alteration provides the opportunity to look forward to 2025. The timeframe of this SEA will therefore extend from a 2007 baseline (although in reality much of the baseline population, household and other data will be derived from 2004) to 2025.

2.2.4 By its nature the proposals and policies of a Structure Plan will have environmental implications in that they influence the use and development of land. Planning at this strategic level is however broad brush identifying general as opposed to specific locations for new development and seeking to guide future development to appropriate locations. This has implications for the approach to the SEA process in that the location specific environmental implications will not be fully addressed until later stages in the process through the Local Plan, Masterplans and Development Guidelines (which will also be subject of SEA) and through planning applications which may in themselves be subject to detailed environmental assessment through Project Environmental Impact Assessment(EIA) as required by separate Regulation (EIA Regulations 1988). In many instances therefore the assessment will only identify potential impacts which will have to be considered in more detail at later stages in the Planning process.

2.2.5 In addition this is only an Alteration to a Plan which is already approved and there is no current intention to revisit the overall aim (“Working Towards Sustainable Development”) the general strategy or underlying objectives. The main implications of the plan will relate to the scale and distribution of future housing land between settlements within the Structure Plan area. This will result in development of urban and greenfield land for housing with consequent environmental implications which will require to be assessed. Other proposals for which the environmental impacts will be considered are highlighted in Appendix 1 of the Structure Plan Issues Paper. The Environment Report will focus on the assessment of the environmental implications of the proposed changes to the plan which are highlighted in the Issues Report and supporting Topic papers. This scoping paper is prepared in this context and the methodology and approach to the environment report will be tailored accordingly.

2.2.6 The SEA Regulations require the likely significant effects of the Plan to be assessed in relation to the following:

- biodiversity, fauna and flora;
- population;
- human health;
- soil;

- water;
- air;
- climatic factors;
- material assets;
- cultural heritage (including archaeological and architectural); and
- landscape.

2.2.7 The Regulations also require that:

- interrelationships between the above factors are assessed; and
- the secondary, cumulative, synergistic, short, medium and long-term, permanent and temporary, positive and negative effects of the above topics are considered, where appropriate.

### 2.3 Key Stages and Programme

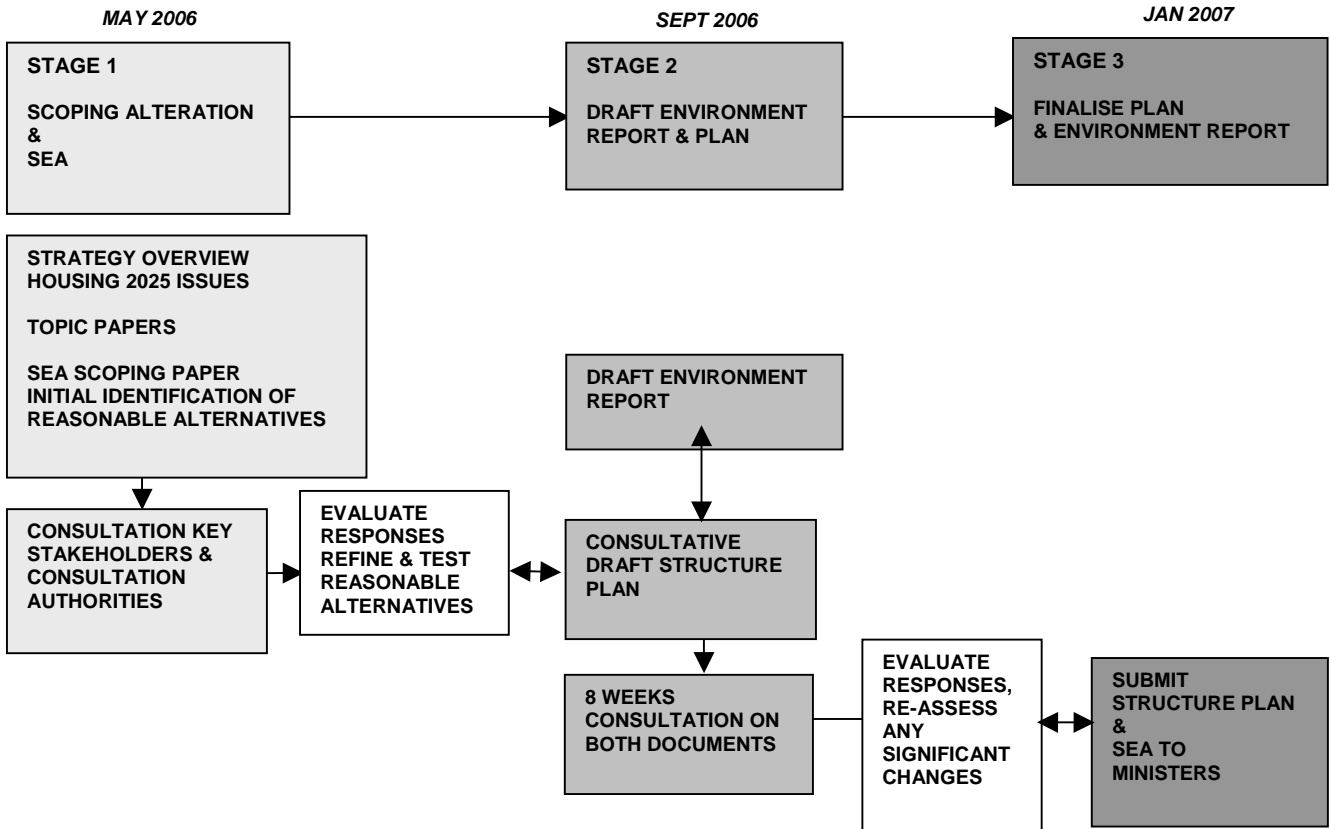
The key stages and likely programme for the SEA are set out in the Table below.

**Table 1. Stages, activities and timescale**

Stage	Activities	Timescale
<b>A: Context, Objectives and Baseline data</b>	Begun at the start of the SEA to inform the scope. Ongoing throughout the process and to include: <ul style="list-style-type: none"> <li>• a review of related plans and programmes to identify environmental objectives and constraints and how the SPA could take these into account;</li> <li>• development of SEA objectives to describe, analyse and compare the environmental effects of the Alteration. Subject to revision throughout the SEA process;</li> <li>• collection of existing environmental baseline data; and</li> <li>• identification of environmental issues/problems.</li> </ul>	March 2006 March 2006 Feb/March 06 March 2006
<b>B: Scope and Developing Alternatives</b>	Using information collected during Stage A, includes: <ul style="list-style-type: none"> <li>• development of options;</li> <li>• distribution of scoping report to consultation authorities;</li> <li>• review of consultation and finalising SEA scope; and</li> <li>• identification of preferred options.</li> </ul>	March/April 06 March/April 06 May 2006 May 2006
<b>C: Assessment &amp; Mitigation</b>	Comparison of existing and future baseline conditions, including: <ul style="list-style-type: none"> <li>• appraisal of SPA Alteration effects;</li> <li>• development of mitigation measures; and</li> <li>• assessment of residual effects with mitigation in place.</li> </ul>	June to Aug 06 June to Aug 06 June to Aug 06
<b>D: Consultation</b>	Stakeholder consultation on the draft SPA and Environmental Report.	Sept to Dec 06
<b>E: Monitoring</b>	Both Councils will undertake monitoring of the effects on the environment of implementing the 3 <sup>rd</sup> Alteration	Feb 07 onwards

Fig 1 illustrates how the SEA process will form an integral part of the Structure Plan preparation process.

**Fig.1**  
**DIAGRAM OF SEA PROCESS & STRUCTURE PLAN PREPARATION**



### **3. Defining Environmental Objectives**

#### **3.1 Identifying relevant environmental objectives.**

3.1.1 The SEA Directive does not specifically require the use of objectives or indicators in SEA, but they are a recognised way in which environmental effects can be described, analysed and compared. Identification of objectives allows the assessment to focus on the inter-relationships between the Plan and the relevant Environmental factors. A clear distinction is made between the environmental objectives derived for the purposes of the SEA and the environmental objectives of the Structure Plan as established through the approved Plan (although a degree of overlap is anticipated). The Plans objectives are not part of this current Alteration so will not be assessed through this SEA process.

3.1.2 Appendix 2 presents a list of draft environmental objectives against which it is proposed this assessment is carried out. These have been derived through a sieving process but also to reflect the particular issues this Alteration will be seeking to address. As such they represent a first draft by the officers involved in this scoping process and it is anticipated that they may be altered or refined through dialogue with the consultation authorities. Appendix 2 also includes reference to baseline data that will be used in the assessment as well as the draft criteria against which the proposals will be assessed. Review of relevant legislation, plans, policies and programmes allows identification of a broad range of environmental indicators which can then be refined to reflect particular local circumstances and the particular scope of this Alteration. The objectives have been devised to ensure full legal compliance by addressing the topics presented in Schedule 2 of the SEA Regulations. The following steps indicate how the objectives identified in Appendix 2 were derived:

- i) Broad scoping of the key relationships between the environmental factors and strategic land use planning, from international, national legislation and policy.
- ii) Sieving these broad objectives by asking "is there any direct or indirect relationship/relevance between this objective and the issues which the Clackmannanshire and Stirling Structure Plan Third Alteration will address?" At this stage this is only a crude overall relevance test and not a test of significance.
- iii) Further refinement to reflect any particular locally significant environmental issues that are not adequately covered by these objectives.

#### **3.2 Review of relevant, plans, programmes and policies**

3.2.1 The 3<sup>rd</sup> SPA is influenced by and will influence the development of a number of other plans, programmes and policies (PPPs). A review of other relevant PPPs is an integral component of the SEA. It aims to identify key issues that could influence development of the SPA, establish links between the PPPs and the emerging SPA, identify key national and regional priorities that need to be taken into consideration in the SEA process and when revising the SPA, and highlight any objectives and indicators that could be used to inform the SEA process.

3.2.2 A list of the relevant International, National, Local and Regional Plans, Policies and Programmes is included in Appendix 3. The information collated during the review of these documents was used to inform the objective derivation process to ensure that all potentially important issues have been included. Appendix 4 scopes the Structure Plan Issues against the Environmental factors.

#### **3.3 Refining objectives to reflect the scope of the Alteration.**

3.3.1 The SEA will identify and address the major environmental issues and problems facing the area highlighting their relationship to land use planning. The supporting documents accompanying this scoping report include full details of the issues which this Alteration will address. It may be that some environmental issues cannot be addressed/and or do not relate to this Plan Alteration but may have a bearing on subsequent stages of the planning process. A brief synopsis of the main environmental issues as they relate to the main issues to be addressed by this alteration are highlighted below. These are not in order of importance and additional issues may arise from consultation on this Scoping Report.

##### ***Locational Strategy***

*New growth projections, particularly for household signal the potential need for more greenfield land release in the longer term but also the need to optimise the use of existing urban land. The approach to accommodating this*

development has a direct bearing on most of the environmental factors identified in the Regulations. It has particular implications in terms of minimising landscape impact, the setting of towns and villages, open/green space, landscape character and quality, reducing the need to travel, energy efficiency and the general promotion of an environmentally sustainable pattern of development. A number of reasonable alternatives to accommodating different growth scenarios and the locational implications (in strategic terms) will be assessed through the SEA. **(See Issues Report and Housing Topic Paper).**

### **Green Belts**

Stirling and Clackmannanshire have significant areas of Green Belt. These will influence the pattern of future development and any proposed change to them may have implications for protection of the historic environment and respecting urban form, settlement pattern and identity as well as for wider biodiversity and landscape objectives. The significance of these impacts, if any will be assessed through the SEA process. **(See Issues report and Environment Topic Paper).**

### **Development in the Countryside**

Scottish planning policy now advocates greater flexibility for development in and around rural settlements and other "sustainable locations" in the countryside. Alternative approaches to considering future development in the countryside will be considered against the relevant environmental objectives. This will raise issues in terms of the protection of the character and quality of the landscape, loss of habitat, reducing the need to travel, energy efficiency and other environmental criteria. The environmental significance and potential mitigation of these will be tested through the SEA. **(See Environment Topic Paper).**

### **Strategic Employment and Shopping Development**

Some problems have been experienced from the loss of employment sites to other uses. There is a large degree of commuting to and from the Structure Plan area. Household growth may signal the need for new shopping opportunities. There may be a requirement to reconsider policies protecting existing town centres, retail and employment and a potential need to identify additional locations. This may result in a change in the use of land with consequent implications on the need to travel, travel patterns, energy efficiency, biodiversity, landscape character and quality. **(See Shopping and Economic topic Papers).**

### **Integrated Transport**

Both Councils are experiencing traffic congestion and road capacity issues associated with existing development and growth in car ownership. The area generates a high level of in and out commuting. Accommodating additional development and population/ household growth has potentially significant implications for the efficient and sustainable operation of the transport network in the area with consequent environmental implications in terms of resource efficiency, air quality and noise pollution. Potential scenarios for locating future growth will have to fully consider associated transport issues. The potential need for new strategic transport provision may be highlighted. **(See Issues Report and Housing Topic Papers).**

### **Waste Management**

The planning system needs to make provision for an appropriate network of waste management facilities taking account of the Plan's strategy and the need to treat waste close to where it arises (the 'proximity principle'). Structure plans should provide a strategic view of waste management, paying attention to the level of waste arisings and implementing the National and Area Waste Plan, thus providing a framework for more detailed policies and proposals in local plans. Where possible, the strategic areas suitable for waste treatment and disposal facilities should be identified. The land use planning system will play an important role in the delivery of the infrastructure required for waste management reform, guiding sustainable development. The policy framework to deliver this has consequent environmental implications in terms of resource efficiency, pollution, habitat protection, biodiversity, landscape quality and character and environmental health. **(See Waste Management Topic Paper).**

### **Minerals**

For the purposes of Strategic Environmental Assessment (SEA), options for assessment will include new policy approaches to opencast coal working, incorporating some elements of the existing General Principles applied to minerals developments in the Plan area. Similar consideration has been given to the planning approach to other minerals but these changes are consequential in nature and it is considered that they are not likely to give rise to any new significant environmental effects. Accordingly, no SEA is proposed in the case of the "Other Minerals" section. Changes to Figure 3.2 are considered minor in nature and also would not be subject to SEA. **(See Minerals topic Paper).**

### **3.4 Locally Significant Environmental Issues.**

3.4.1 Most of these were included in the range of broad environmental objectives identified through steps one and two above but some slight changes were included to reflect the following local issues-

- **The quality, character and distinctiveness of the Structure Plan Area;** Maintaining the important qualities and relationships between the Ochils, Carse, Campsies, the Trossachs, the River Forth and the setting of the Castle and Wallace Monument.
- **The rural setting of settlements :** The area is still predominantly rural : a pattern of towns and villages within a countryside setting .
- **The importance of Green Belt :** Related to the above, the importance of protecting the setting of settlements and historic views.
- **Flooding :** The Structure Plan area contains extensive low lying areas with potential flooding impacts.
- **Diversity of habitats and species within the area :** The Local Biodiversity Action Plan identifies a wide range of species and habitats within the Structure Plan area.

## 4. Methodology

### 4.1 Objective Testing

4.1.1 The SEA objectives will be tested for their internal compatibility to identify any potential tensions and conflicts, as recommended in good practice guidance. Many of the objectives complement each other, but there may be some tensions.

### 4.2 Baseline Summary

4.2.1 The collation of baseline environmental data helps to identify the current state of the environment and is the basis for predicting and monitoring the likely environmental effects of the SPA. It can also assist the identification of key issues and potential opportunities for the area. The baseline data collation process will establish the current situation, an indication of some key trends, indicators, current targets, areas of uncertainty and current data gaps.

4.2.2 The collation of baseline data is an ongoing process so information will be updated and refined as the SEA proceeds and as further information is collected. It is intended that data collected will help to answer the following questions:

- How good or bad is the current situation, including temporal trends?
- How far removed is the current situation from thresholds, objectives or targets?
- Are particularly sensitive or important elements of the environment affected?
- Are the problems of large or small-scale, and will any impact be reversible or irreversible, permanent or temporary, direct or indirect?
- How difficult would it be to offset or remedy any damage?
- Have there been significant cumulative or synergistic effects over time? Are there expected to be such effects in the future?

4.2.3 A description of the current state of the environment will be provided in the Environment Report. A file/report will be collated to include the environmental information relevant to this Structure Plan Alteration. Appendix 2 highlights some of the baseline information which will inform the assessment. The Housing Topic Paper which forms part of a set of documents prepared to inform this Issues stage of the Plan preparation process indicates current trends in terms of population, travel to work, households, employment etc. The Councils have constraints mapping information on all designated wildlife sites as well as habitat and biodiversity information collated through its Biodiversity officers and Biodiversity Action Plans. Data is also available on vacant and contaminated land, flood risk and air quality (through the air quality strategy). Previous landscape studies will inform the process including the SNH produced Landscape Character Appraisals, reports produced during the last Structure and Local Plan reviews by David Tyldesley and by LUC landscape consultants. A range of transport statistics can be accessed through the Local Transport Strategies along with information held by the Councils on Listed Buildings, historic landscapes and Conservation Areas. External information sources will be utilised such as the water quality data from SEPA, Health statistics collated through the Healthy Cities Co-ordinator for Stirling, Social Services, SNH and the Health Board will also be considered along with the possible inclusion of some element of Health Impact Assessment.

### 4.3 Assessment.

4.3.1 A matrix based approach to the assessment of the Plan against the stated objectives is proposed. This will be approached as follows:-

- **Relevance-** Is the objective relevant to the particular proposed policy or change in approach?

**If Yes** - Does it have a significant environmental effect?

**If Yes** - Is this positive, neutral, negative or uncertain?

- Where any potentially negative or uncertain effects are identified an indication of the potential for mitigation or reducing uncertainty will be stated.

- The Checklists will be accompanied by a more detailed written explanation of the reasons, issues and conclusions of the assessment

- Where relevant and possible any potential synergistic or cumulative relationships/ impacts will be identified through the assessment process.
- Assessment will be carried out on the broad strategic options as well as particular policies and any recommendations will feed back to the relevant stages of the Plan process- namely to inform the Consultative Draft Plan and in assessing any proposed changes resulting from consultation on the Plan and the Environment Report.

4.3.2 There are potential cumulative and synergistic implications of the strategy for locating future development which will also be addressed where feasible through the SEA using available environmental information and professional judgement.

#### 4.4 Reasonable Alternatives : Alternative Scenario Development

4.4.1 The Councils intend to test "reasonable alternatives" as part of the SEA process. This reflects the requirements of the Regulations requiring such alternatives to have been examined before settling on an option to form the basis of the Draft Plan. The SEA of those alternatives informs, but does not necessarily dictate, the choice. A range of reasonable alternatives are set out in the attached Issues Report and Topic Papers. These papers make reference to some of the locational issues but these will be more clearly identified once the scale of growth has been determined.

4.4.2 As the intention behind the SPA is to avoid, if possible, radical change to the 2002 Plan's strategy, 'reasonable alternatives' will be limited. These will include differing scales and locations of new development but within the existing locational framework, although a change in the locational emphasis set out in Fig 2.3 on page 7 of the approved Structure Plan may be required. For comparison purposes a 'base case' scenario of continuing in the context of the Approved Plan is adopted, with no additional strategic development land released. Broad strategic scenarios will be tested and once a favoured scenario/approach is identified the corresponding policy wording will be tested. If the favoured approach to which the policy response will be tailored is not consistent with the best environmental option, clear reasons will be stated and opportunities for mitigation explored.

- Stage 1 Test the strategic alternatives set out in the attached Issues Report and Supporting Topic Reports (this will test general locations to meet land requirements, *for example, say an option for an additional 500 houses on greenfield land in East or North or West Stirling*).
- Stage 2 Identify the favoured environmental option(s) and input to the wider Planning appraisal which will consider these along with other social, economic and wider sustainability issues.
- Stage 3 Identify the preferred option for further consultation and develop relevant policies and proposals.
- Stage 4 Test specific Policies and proposals and refine accordingly.
- Stage 5 Publish Consultative Draft Plan with Draft Environment Report.
- Stage 6 Consider all comments received, refine Plan and Environment Report accordingly.
- Stage 7 Repeat testing if any significant proposed changes to the Plan's policies and proposals before finalising the Plan and Environment Report for submission to Scottish Ministers.

4.4.3 Once an option is identified this will lead to the development of the corresponding policies and proposals. Whereas alternative options will be tested it is not intended that a range of alternative policy and proposal wordings will be tested as this would prove unwieldy and lose the strategic focus of the assessment. The Plan option may eventually be an amalgam of particular elements from different scenarios if they are individually shown to 'perform' well. The Plan will also be assessed against a full range of planning criteria and any conclusions from the environmental assessment will have to be balanced with wider sustainability, infrastructure, economic and social considerations.

4.4.5 Research on the various aspects of the Plan Alteration (housing needs, affordable housing, transport network capacities, drainage capacities, schools provision, etc) is ongoing, and where possible (and relevant) will also feed into the SEA process. The SEA will consider realistic alternatives/options for the SPA that will be developed with regard to geographical, technological and financial constraints.

## 5. Environment Report

### 5.1 Draft contents

5.1.1 The findings and recommendations of the SEA process will be presented in an Environment Report which will include the following key elements:

- An outline of the contents, main objectives of the Plan and relationships with other relevant policies, plans and programmes.
- The relevant aspects of the current state of the environment and the likely evolution thereof without implementation of the Plan.
- The environmental characteristics of areas likely to be significantly affected.
- Any existing environmental problems which are relevant to the Plan including, in particular, those relating to any areas of particular environmental importance, such as Natura 2000 sites.
- The environmental protection objectives established at International, Community or national level which are relevant to the Plan and the way those objectives and any environmental considerations have been taken into account during its preparation.
- The likely significant effects on the environment, including : biodiversity; population; human health; fauna; flora; soil; water; air; climatic factors; material assets; cultural heritage including architectural and archaeological heritage; landscape; and the interrelationship between the above factors. These effects should include secondary, cumulative, synergistic, short-, medium- and long-term, permanent and temporary, positive and negative effects.
- Measures envisaged to prevent, reduce or as fully as possible offset any significant adverse effects on the environment of implementing the Plan.
- An outline of the main reasons for selecting the alternatives dealt with and a description of how the assessment was undertaken, including any difficulties (such as technical deficiencies or lack of expertise) encountered in compiling and assessing the required information.
- A description of measures envisaged concerning monitoring.
- A non-technical summary of the information provided in the Environment Report, as described above.

5.1.1 There will be a large amount of data to include and therefore the information will be presented as succinctly as possible. The document will be fully accountable and transparent and will highlight areas of uncertainty and data gaps.

### 5.2 Consultation

5.2.1 This SEA and Plan process will include three separate stages of consultation:-

- i) With Consultation Authorities on the scoping report:-
  - Scottish Environment Protection Agency (SEPA)
  - Scottish Natural Heritage (SNH)
  - Scottish Ministers (i.e. Historic Scotland)
- ii) In tandem with Public consultation on the Draft Plan
- iii) In tandem with Consultation on the Finalised Plan

5.2.2 The SEA process will be open and feedback received from consultees will be incorporated into the process throughout. The first stage of consultation will be on this Scoping Report. This will be followed by a major consultation exercise on the draft Environment Report which will be issued to consultees such that they can provide comments on the report and the Plan.

5.2.3 In addition, stakeholder organisations and the wider public will also be notified of the consultation period for the Environment Report. A full audit trail will be made available so that it is evident how consultee comments or opinions have been included or excluded in the final Plan.

5.2.4 It is anticipated that the consultative draft of the 3<sup>rd</sup> SPA will be published in September 2006 and that an appropriate consultation period of at least eight weeks will be set aside for interested parties to make representations on the Environment Report at this draft stage of the SPA process. A similar, appropriate period will

be provided for public scrutiny of the finalised version of the Environment Report at the same time that the finalised version of the SPA is submitted to Scottish Ministers.

### **5.3 Monitoring**

5.3.1 It is a requirement of the SEA Directive that the significant environmental effects of the plan are monitored. Although this is the last stage identified in the SEA process, its formulation commences when reviewing baseline information and documentation to enable the identification of existing monitoring frameworks. Once the draft objectives are finalised a set of indicators will be derived. Wherever possible these indicators will rely on existing data sources ie. planning application and building control records, habitat, air and water quality monitoring etc but data gaps may be identified and the need for new approaches to monitoring will be highlighted where required. In some cases it may only be realistic to have relatively global indicators (ie for the Structure Plan or Council areas as a whole or even for a larger geographical area). Wherever possible indicators will however be identified where there is a direct causal relationship to the potential outcomes of the Structure Plan process.

#### **5.4 Consultation Questions**

1. Are the SEA objectives suitable in the context of the Clackmannanshire and Stirling areas?
2. Are there any objectives which should be added or removed?
3. It may be necessary to rank objectives to help assess options – do any hold particular importance?
4. Do the indicators provide a relevant measure for the associated objective? If not, please suggest alternatives.
5. Is the suggested baseline information appropriate for the Alteration?
6. Is there additional baseline data which should be included?
7. Is the suggested baseline data appropriate for the Alteration?
8. Is there additional relevant baseline data which should be added to that listed?
9. Are the issues listed in 3.3 the key environmental issues relevant to Alteration No.3 – Housing and related issues?
10. Should additional issues be included, or removed?
11. Do you have any comments on the proposed methodology for the assessment process or content of the Environmental Report?

## Appendices

### Appendix 1: Natura 2000 Sites

Natura 2000 is a European network of protected sites which represent areas of the highest value for natural habitats and species of plants and animals which are rare, endangered or vulnerable in the European Community. The term 'Natura 2000' comes from the 1992 EC Habitats Directive and symbolises the conservation of precious natural resources for the year 2000 and beyond. Scotland's Natura 2000 sites will help to protect these important areas now and for generations to come. The following 2 classifications form the Natura 2000 network of sites.

#### **Special Areas for Conservation (SACs)**

SACs are areas designated under the European Directive commonly known as the Habitats Directive. Such areas support rare, endangered or vulnerable natural habitats and species of plants or animals (other than birds). The following sites wholly or partly within the Structure Plan area have been designated as SACs:

Endrick Water

Flanders Moss, Kippenrait Glen, Meall na Samhna, River Teith, Trossachs Wood, Ben Heasgarnich, Ben Lui, River Tay, Flanders Mosses, Loch Lomond Woods, Ben Lawers.

#### **Special Protection Areas (SPAs)**

SPAs are classified under the EC Directive on the Conservation of Wild Birds (70/409/EEC), commonly referred to as the Birds Directive. The Directive required the Member States of the European Community to identify and classify the most suitable territories, in size and number, for certain rare or vulnerable species (listed in Annex I of the Directive) and for regularly occurring migratory species. SPAs are intended to safeguard the habitats of the species for which they are selected and to protect the birds from significant disturbance. The following sites wholly or partly within the Structure Plan area has been designated as a SPA:

Firth of Forth(Part)	Stirling; Clackmannanshire
Loch Lomond	Stirling

The above sites have all been confirmed as sites of (European) Community Importance.

**Appendix 2: Draft SEA : Objectives, Environmental factors and assessment criteria.**

Draft Environmental Objectives: What kind of effect will the option, policy or proposal have on this objective?	Environmental factors:		Source of baseline data/ potential monitoring, assessment criteria.
	Principal	Other	
1 Maintain and enhance biodiversity, avoiding irreversible losses affecting nationally designated sites, protected species and habitats	Biodiversity, fauna, flora	Soil, water, air, human health, landscape	Designated conservation sites; priority habitats and species of conservation concern, RSPB, SEPA state of the Environment reports, SNH reports and monitoring <b>Assessment criteria</b> : Will the proposal contribute to this objective by avoiding locations which could cause potential losses and encourage enhancement?
2 Maintain and enhance habitats and species of local conservation value	Biodiversity, fauna, flora	Soil, water, air, human health, landscape, cultural heritage	Species and habitats of local conservation concern, Forestry Commission Scotland, Local Biodiversity Action Plan. <b>Assessment criteria</b> : Will the proposal contribute to this objective by creating new habitat, enhancing or avoiding damage to existing habitats?
3 Reduce the need to travel (by unsustainable means)	Air, climatic factors, human health	Population	Travel mode surveys; accessibility of new development to work, school, shopping etc. Surveys, census, LTS, GIS mapping <b>Assessment Criteria:</b> Does the proposal direct development to location(s) which reduce the need to travel?
4 Maintain and enhance accessibility by sustainable transport modes	Human health, population, climatic factors	Air	Travel mode surveys; accessibility of new development to public transport corridors; cycle routes. Mapping of public transport and cyclepaths. Surveys, census, LTS <b>Assessment criteria:</b> Does the proposal direct development to accessible location(s) with high quality frequent service public transport.
5 Improve the quantity and quality of accessible and usable recreational and cultural opportunities	Population, human health	Landscape, material assets, biodiversity, fauna, flora	Location in relation to Open space and other opportunities- Open space surveys; Core Path networks. <b>Assessment Criteria:</b> Is the proposal potentially accessible to recreational/cultural opportunities.

<p>6 Maintain quality of, and avoid exacerbating pollution of, air, water and soils</p>	<p>Air, water, soils</p>	<p>Human health</p>	<p>Air quality monitoring; Water quality and water body characterisations; remediation of contaminated land <i>SEPA, Env Health services, Scottish Water</i> <b>Assessment Criteria:</b> Will the proposal significantly exacerbate existing or cause new problems</p>
<p>7 Encourage forms of development that facilitate healthy lifestyles, address safety concerns, and avoid exacerbation of harmful factors (eg noise)</p>	<p>Human health, population</p>	<p>Material assets</p>	<p>HIA determinants of health; designing out crime; community noise monitoring; accident prevention programmes; proximity to inclusion of recreation/sports facilities, encourage walking/cycling. Surveys, Health care trusts, census, Police records, Env Health services, Planning records <b>Assessment Criteria</b> ; Does the proposal have potential to contribute to the principles of healthy urban planning.</p>
<p>8 Guide development to minimise or avoid risks associated with climate change (eg flood risk avoidance; severe weather effects avoidance)</p>	<p>Climatic factors</p>	<p>Population, human health, material assets</p>	<p>Flood Risk Mapping and historical data. incidents affecting property; storm damage reports <i>Councils' Flood Prevention Act reports; insurance records</i> <b>Assessment Criteria:</b> Does the proposal direct development to avoid areas of known risk, could it contribute significantly to risks downstream.</p>
<p>10 Enable energy efficiency, contribute to the ability of communities to utilise and generate renewable energy.</p>	<p>Climatic factors</p>	<p>Air, water, human health, biodiversity</p>	<p>Local Climatic conditions, slope, aspect, exposure. Monitoring through energy consumption levels; numbers of properties designed/adapted to increase renewable energy use Planning and Building Standards records <b>Assessment Criteria</b> : Can the proposal contribute to this objective?</p>
<p>11 Contribute to the ability of communities to minimise waste, and maximise waste recovery, recycling, composting etc</p>	<p>Human health,</p>	<p>Water, air, soils, material assets</p>	<p>Monitoring through numbers of recycling centres; percentages of waste going to landfill, to recycling, to composting, etc; numbers/scale of buildings demolished Waste Management services, Area waste Plan, Building Standards records <b>Assessment Criteria:</b> Can the proposal contribute to this objective?</p>
<p>12 Encourage forms of development that enable reductions in greenhouse gas emissions</p>	<p>Climatic factors</p>	<p>Air, population, human health,</p>	<p>Measures of greenhouse gas emissions by area and source <i>Env Health services, SEPA, Scot Exec.</i> <b>Assessment Criteria:</b> Can the proposal contribute to this objective?</p>

<p>13 Maximise re-use of land, buildings where compatible with other objectives (eg biodiversity)</p>	<p>Material assets</p>	<p>Population, human health, biodiversity, landscape</p>	<p>Re-use and conversion of existing buildings; proportions of new development on brownfield land. Planning records. <b>Assessment Criteria:</b> Is there potential for the proposal to re-use land and buildings.?</p>
<p>14 Conserve historic buildings and other elements of built cultural heritage</p>	<p>Cultural heritage</p>	<p>Material assets, landscape, population</p>	<p>Re-use and conversion of Listed Buildings; approved developments requiring SMC; numbers of proposals altered to conserve archaeological interest <i>Planning &amp; Historic Scotland records</i> <b>Assessment Criteria:</b> Will the proposal have a potentially significant impact on cultural heritage?</p>
<p>15 Respect the pattern and form, and the landscape and historic setting of settlements, particularly where locally distinctive</p>	<p>Material assets, cultural heritage, landscape</p>	<p>Population, human health, biodiversity</p>	<p>Numbers/scale of approved developments in Green Belts; numbers/scale of developments approved as departures from Development Plan in urban fringe locations Planning records <b>Assessment Criteria:</b> Will the proposal contribute to this objective?</p>
<p>16 Conserve and enhance the quality and local diversity of landscapes</p>	<p>Landscape</p>	<p>Cultural, heritage, biodiversity, material assets, human health, water</p>	<p>SNH Landscape Character Appraisals, other Local Landscape Assessments <b>Assessment Criteria :</b> What impact will the proposal have on the particular qualities and character of the areas landscape?</p>
<p>17 Encourage high design quality, and resilient forms of development that will not lead to repeated calls on environmental resources</p>	<p>Material assets</p>	<p>Population, human health, cultural heritage</p>	<p>Existing quality of the established built environment. Perceived impact of recent new development. Use of sustainable materials and building practices. <b>Assessment Criteria:</b> Can the proposal contribute to this objective?</p>

### **Appendix 3: Review of Plans, Programmes and Policies relevant to the Clackmannanshire and Stirling Structure Plan Alteration No. 3 – Housing and related issues.**

#### International Level

Waste Directive 1975/442/EEC  
Bern Convention on European Wildlife and Natural Habitats (1979)  
Conservation of Wild Birds Directive 1979/409/EEC  
Habitats Directive 1992/43/EEC  
Convention on Biodiversity (1992)  
United Nations Framework Convention on Climate Change (1994)  
The Pan-European Biological and Landscape Diversity Strategy (1995)  
Ambient Air Quality Assessment and Management Framework Directive 1996/62/EC  
European Biodiversity Strategy (1998)  
Water Framework Directive 2000/60/EC  
European Union Strategy for Sustainable Development (2001)  
The Sixth Environmental Action Programme of the European Community (2002)  
Johannesburg Declaration on Sustainable Development (2002)  
Council Directive on the Assessment and Management of Environmental Noise 2002/49/EC  
Kyoto Protocol on Climate Change  
European Climate Change Programme

#### National Level

National Planning Framework for Scotland  
SPP 1 The planning system  
SPP 2 Economic development  
SPP 3 Planning for housing  
SPP 7 Planning and flooding  
SPP 15 Planning for rural development  
SPP 21 Green Belts: Consultation Draft  
NPPG 5 Archaeology and planning  
NPPG 10 Planning and waste management  
NPPG 14 Natural Heritage  
NPPG 18 Planning and the historic environment  
Framework for Economic Development in Scotland  
A strategy for the conservation and enhancement of biodiversity in Scotland  
The Air Quality Strategy for England, Scotland, Wales and Northern Ireland  
The UK Programme for Climate Change  
Scottish Climate Change Programme (SE/2000/208)  
National Waste Plan (Scotland), 2003  
Securing a Renewable Future: Scotland's Renewable Energy (2003)  
UK Energy White Paper  
Scotland's Renewable Energy Potential: realising the 2020 target (2005)  
UK Sustainable Development Strategy, March 2005  
Scottish Sustainable Development Strategy, December 2005

#### Local and Regional Level

Clackmannanshire and Stirling Structure Plan and its first and second alterations.  
Forth Valley Area Waste Strategy and Plan

#### *Clackmannanshire:*

- Local Biodiversity Action Plan
- Local Plan
- Community Safety Strategy
- Local Housing Strategy
- Open Space Strategy (Draft)
- Access Strategy (Draft)
- Transport Strategy (Draft)

#### *Stirling:*

- Local Biodiversity Action Plan

- Local Plan
- Community Safety Strategy
- Local Housing Strategy
- Energy Policy and Strategy
- HECA Strategy
- Procurement Policy
- Economic Development Strategy
- Roads Management Plan
- Best Value Improvement Plan
- Equalities Framework
- Joint Health Improvement Plan
- Open Space Strategy (Draft)
- Access Strategy (Draft)
- Transport Strategy (Draft)
- Community Plan (Draft)



## Appendix 4 - Scoping of SEA Issues

Key ✓ Scoped In X Scoped Out	SEA Issues	Biodiversity Flora, Flora	Pop	Human Health	Soil	Water	Air	Climatic Factors	Material Assets	Cultural Heritage	Landscape	Justification for Scoping Out
<b>STRUCTURE PLAN ALTERATION TOPIC</b>												
		X	X	X	X	X	X	X	X	X	X	Minor updating only – No substantive changes to text
		?	?	?	?	?	?	?	?	?	?	SEA only required if Green Belt land releases are required to meeting housing and employment land requirements)
		X	X	X	X	X	X	X	X	X	X	Minor updating only – no substantive changes to text
		X	X	X	X	X	X	X	X	X	X	Minor updating only to reflect establishment of Nation Park
		X	X	X	X	X	X	X	X	X	X	No change of circumstances, therefore no need for structure plan review
		X	X	X	X	X	X	X	X	X	X	Updating only of text and polices to reflect changes to legislation and national policy guidance
			✓	✓	✓	✓	✓	✓	✓	✓	✓	
		X	X	X	X	X	X	X	X	X	X	Minor amendments only – substantive changes to policies
		✓	✓	✓	✓	✓	✓	✓	✓	✓	✓	
		✓	✓	✓	✓	✓	✓	✓	✓	✓	✓	
		✓	✓	✓	✓	✓	✓	✓	✓	✓	✓	(Assumes some relaxation of existing constraint policies in response to new national policy guidance)

Shopping		?	✓	✓	?	✓	✓	✓	✓	✓	?	(Assumes major new developments to meet retail floorspace requirements in the Stirling area)
Housing		✓	✓	✓	✓	✓	✓	✓	✓	✓	✓	(Assumes major land releases to meet housing land requirements)

